

# Tools and Tips:

As you build the book will show in my many picture manual how to assemble. You can use your own methods as you desire, but these worked best for me. A smooth, flat work surface is very important and the more space the better.

The photo on left is basic tools needed:

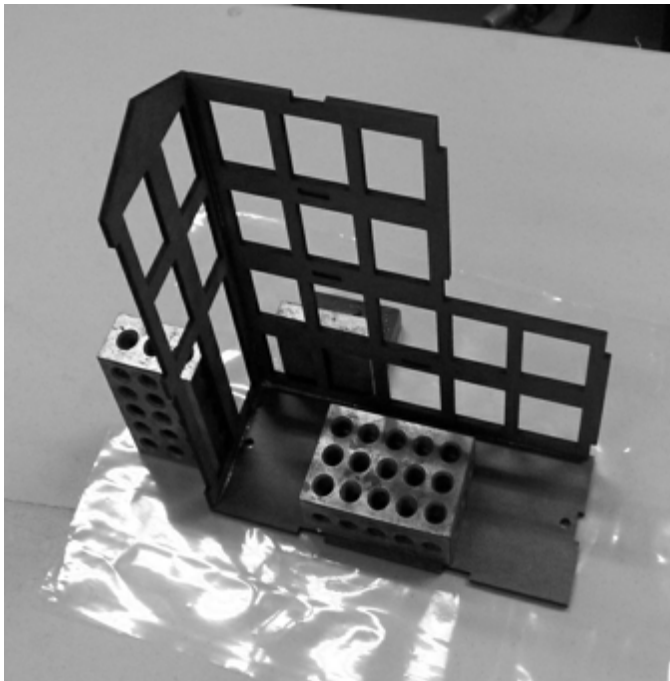
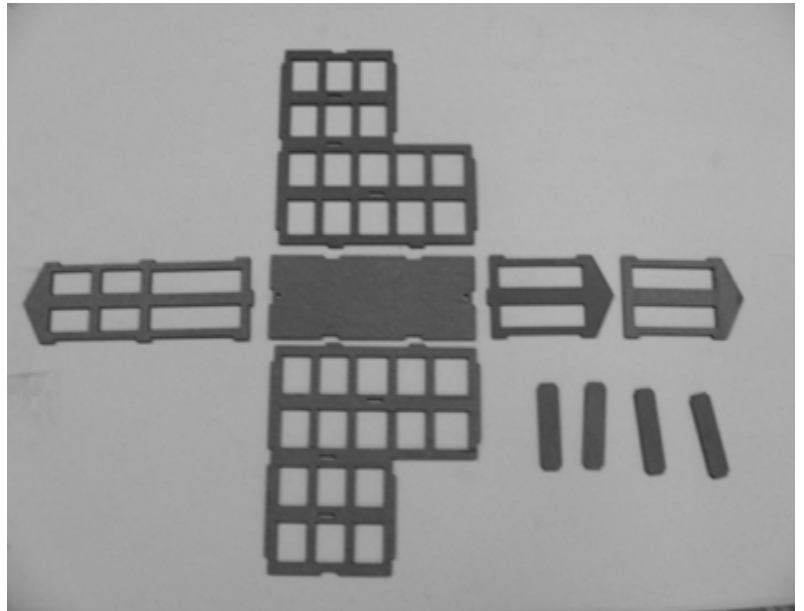
- A square and angle plates, also I use 123 blocks both to square and use as weights while glued parts dry.
- Hobby knives and plenty of # 11 blades
- While majority if not all parts are laser cut some of kits will need parts cut. A zona saw & miter is handy as also a Chopper.
- A assortment of sanding blocks a must to touch up parts and make perfect fits.
- For glues, CA (cyanoacrylate and quick set) white glue, I like Aleene's Tacky Glue. And most important how you apply the glue, not to much but enough to make strong bond. Using syringes for water base glues and needle applicators on CA a must.
- For clean up q-tips or micro tip brushes wore great to clean up excess glue.

Most all of these can found at good hobby shop or I order from Micro-Mark online.

For painting will depend on materials but for wood best to not use water base paints. For best results use Floquil solvent-based enamel. Apply with air brush is best but brushing works also. I will make suggestions when to paint and colors I used for model built. The important thing is to take your time, test fit parts, look over photos before you make the final bond. If ever not sure feel free to contact me for help as I am here to help.

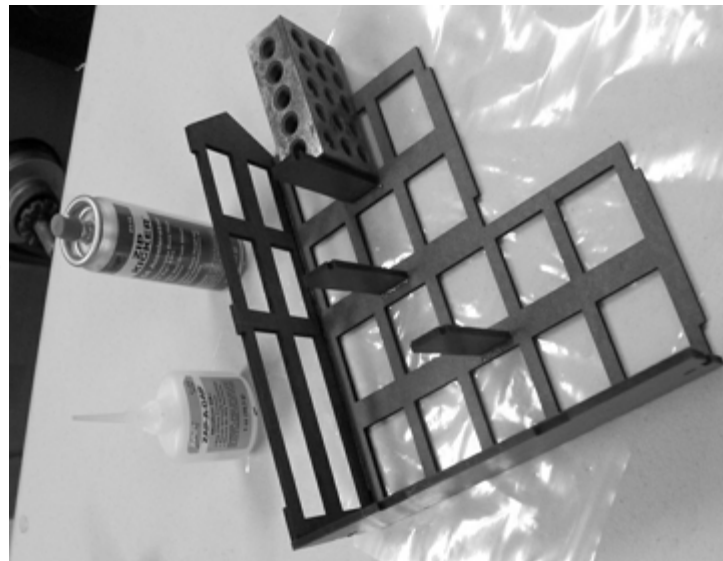
# Picklers Warehouse Assembly

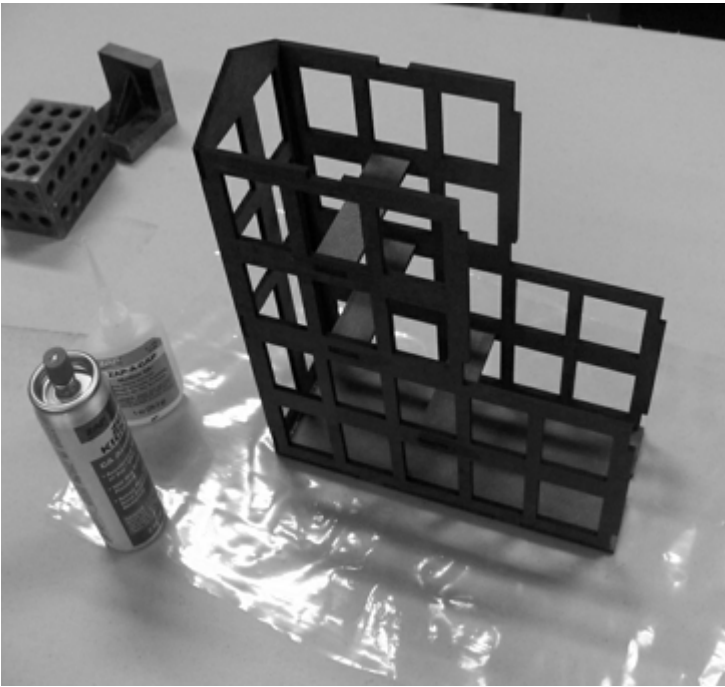
Locate package for assembling main center part of building.  
This package includes masonite base and 1/16" clapboard siding.  
Inspect and lightly sand edges where it will be bonded. Layout as photo to right.



Use CA or aleenes tacky glue to bond. Test fit end wall, side wall and base as pictured to left. I like to use steel 123 blocks to keep walls square and hold while glue dries. But not required, any type of weight will do or tape. Then CA parts together and use accelerator to set up faster.

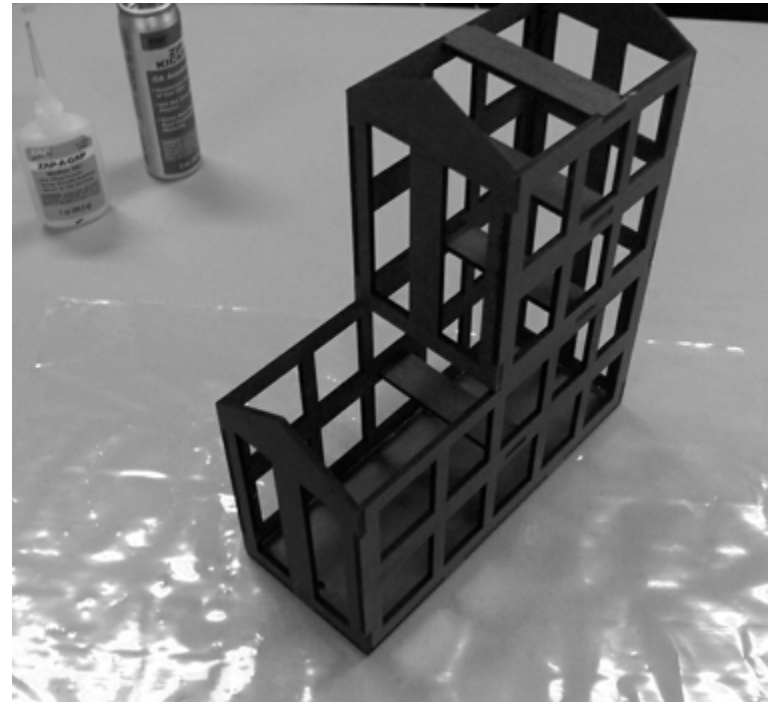
Next add internal braces to side wall, square them, then glue using CA. Here you see I used 123 blocks to keep parts square as you build. Take your time and let glue set up as you proceed step by step.



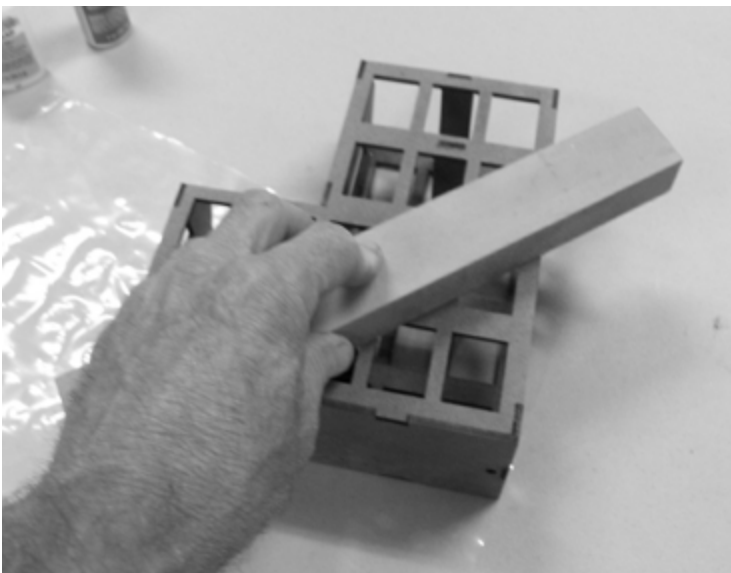


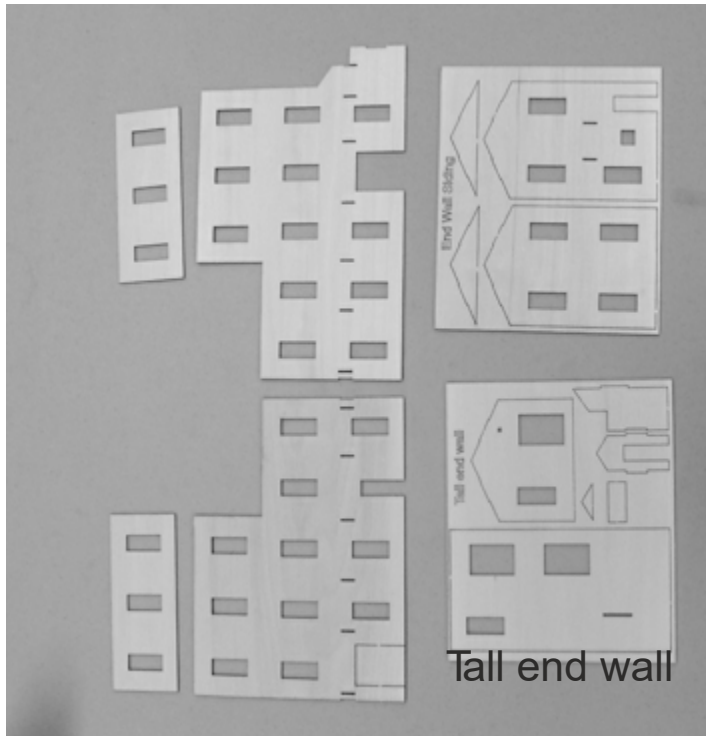
Next bond opposite side, test fit parts then bond using CA and accelerator.

Then finish up internal structure by bond last two end walls and fourth brace at top of building.



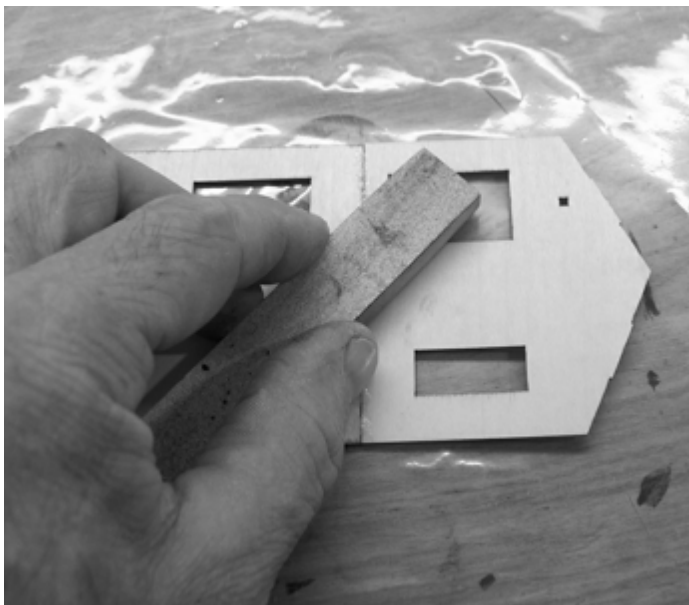
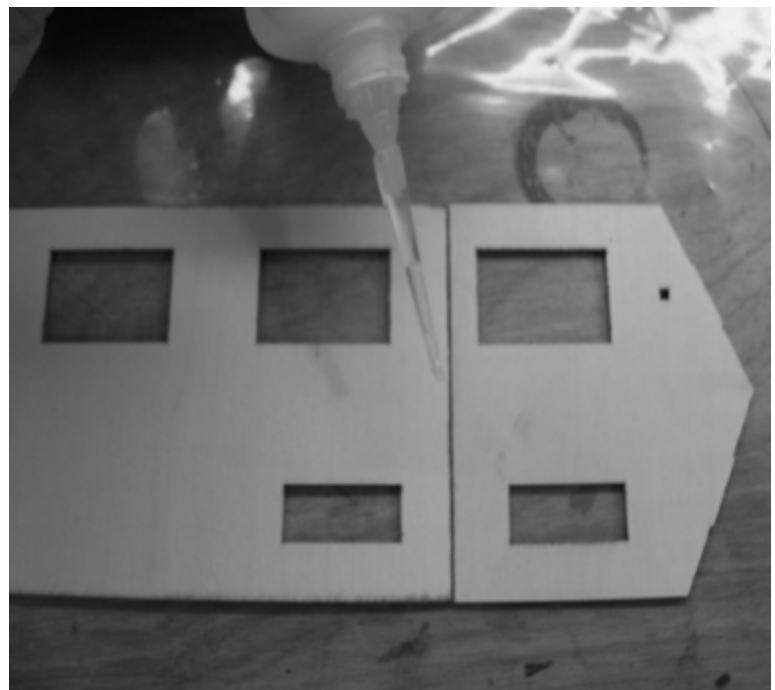
Next after assembly glue dries block sand all faces smooth with 120-180grit sand paper. All surfaces should be scuffed and corners smooth and square.



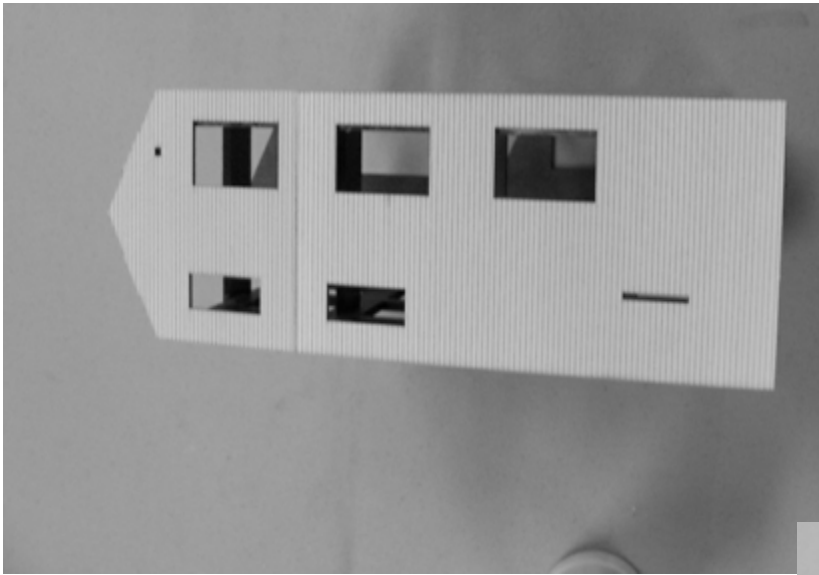


Next layout clapboard siding as pictured to left. The end walls need to be cut from sheet. Notice that the sides and tall end wall are two pieced. They will need to be matched and bonded together at the tops.

Here in picture to right you see tall end wall. Face up first sand the meeting edges so clap board matches up. not too much or siding height will be short. Once your pleased with fit place siding face down and with med-thick CA bond edges together. Spray with CA accelerator.

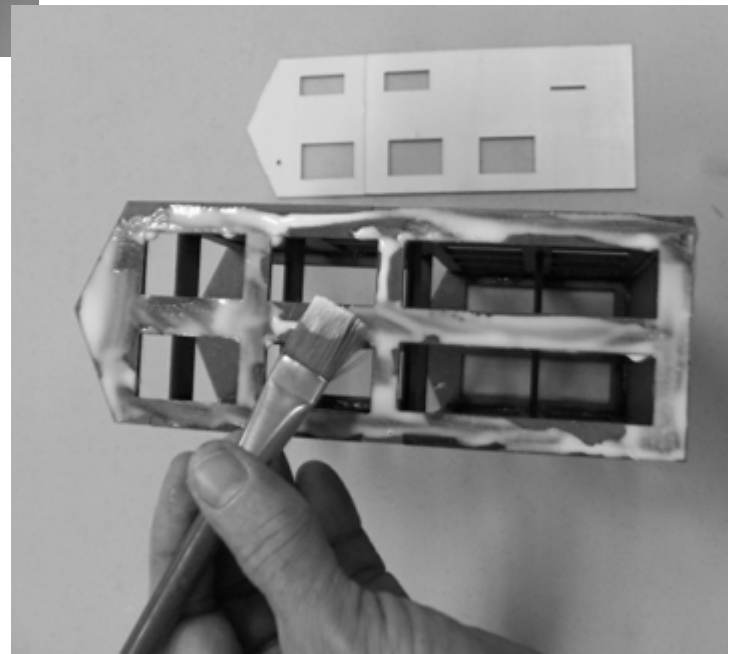


Once kicks (sets up) with sanding block sand surface flat. I use 80-100 grit paper from quick aggressive sanding of this type. The whole back can be lightly sanded once seem is a match. Then clean off dust.

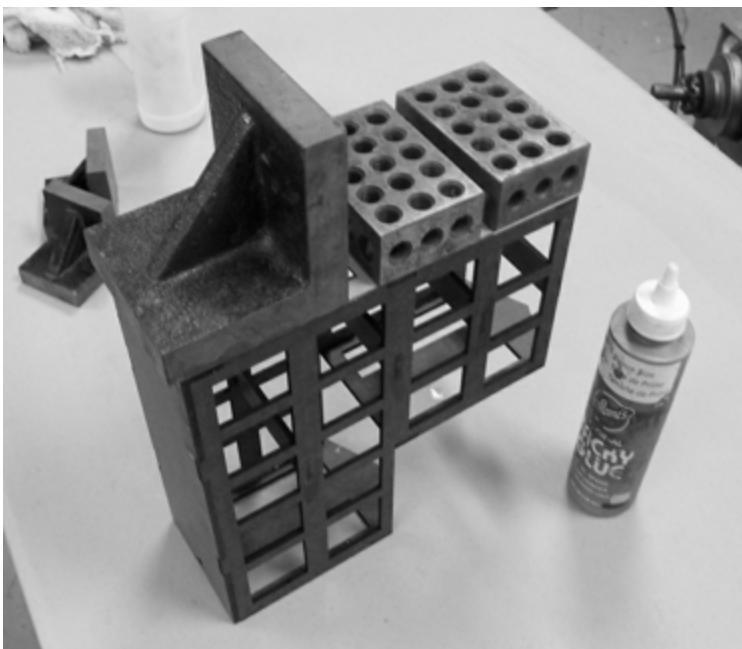


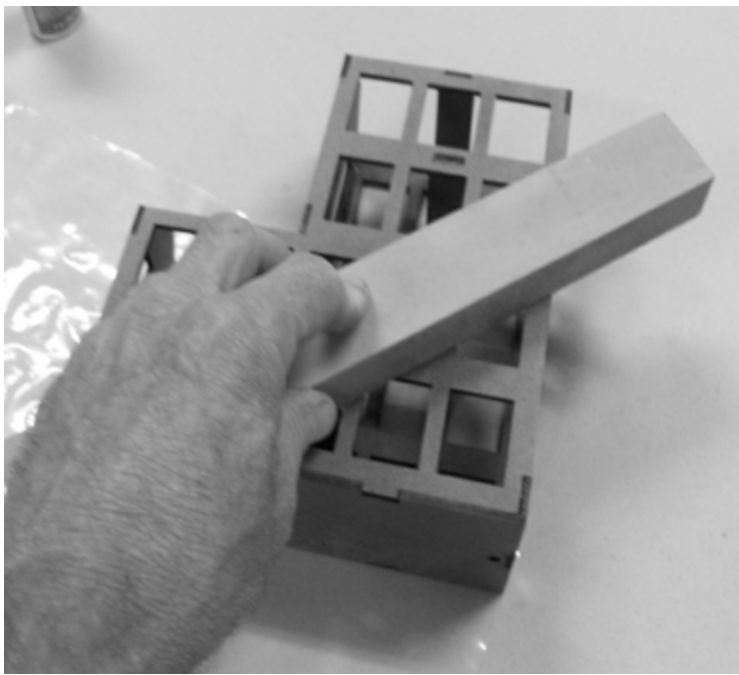
In to picture to left we test fit siding on tall end of frame. Bottom and sides should be flush or slightly over hang. Once you are pleased with fit it time to bond clap board siding.

I like Aleenes tacky glue but white works fine also. You see in picture to right being applied then smooth out with brush. If any runs down side of frame clean up before placing siding on wet glue. Not to much but enough to bond basswood siding. Center as test fitted above the weight down as pictured below.



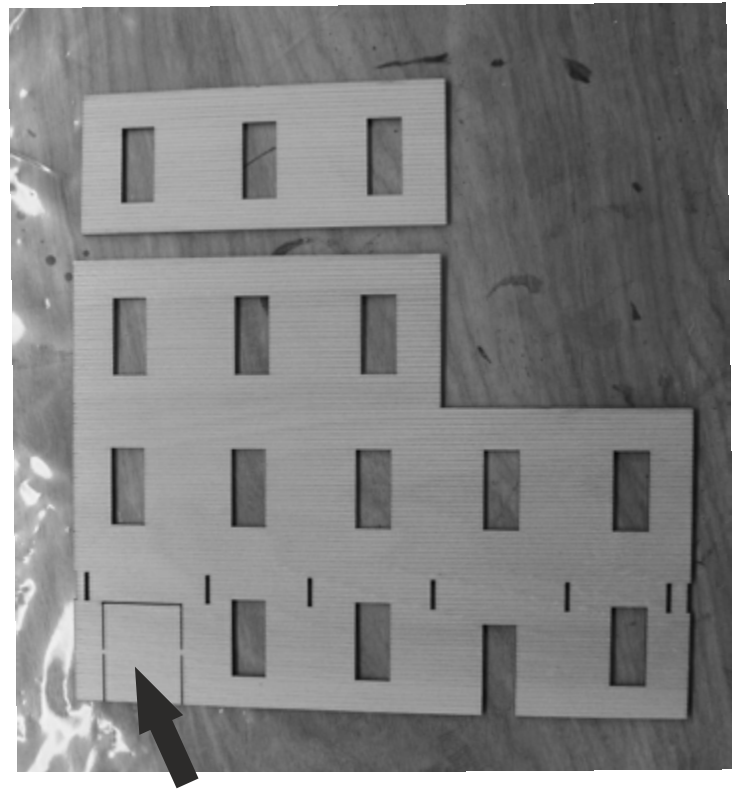
I start in center and place weght their first then to each side. Heres where 123 blocks or angle plates work great. But what ever flat weight that works for you is fine. Then clean any excess glue with wet q-tips and or towel. Double check part still match if they are moving a lot you are using to much glue. Once dries bond the opposite end walls, will be easier being these are one piece walls. But always test fit before bonding parts.



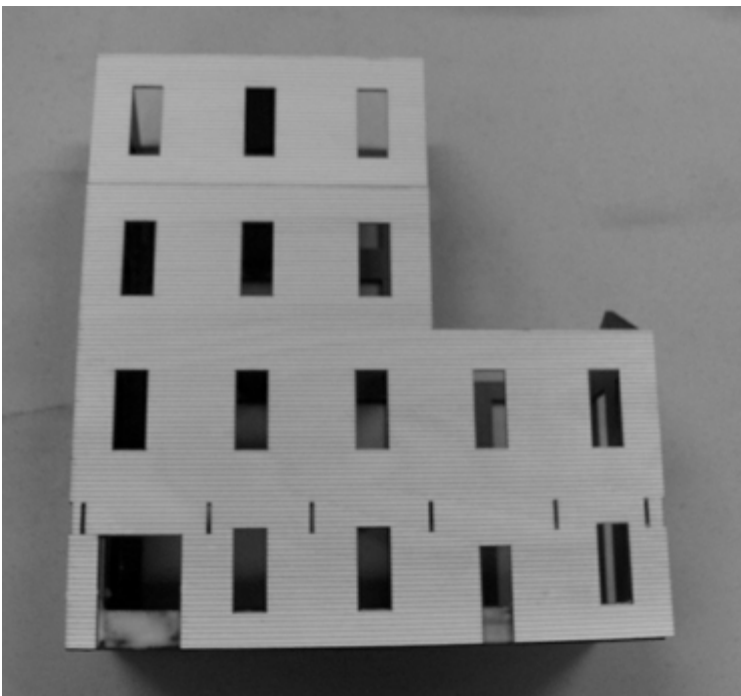


Next after glue dries sand end walls flush with sanding block. Then clean off dust from frame. If there is any lifting of siding on edges make repair. Sand bottom flush also but not top as it is keyed for roof.

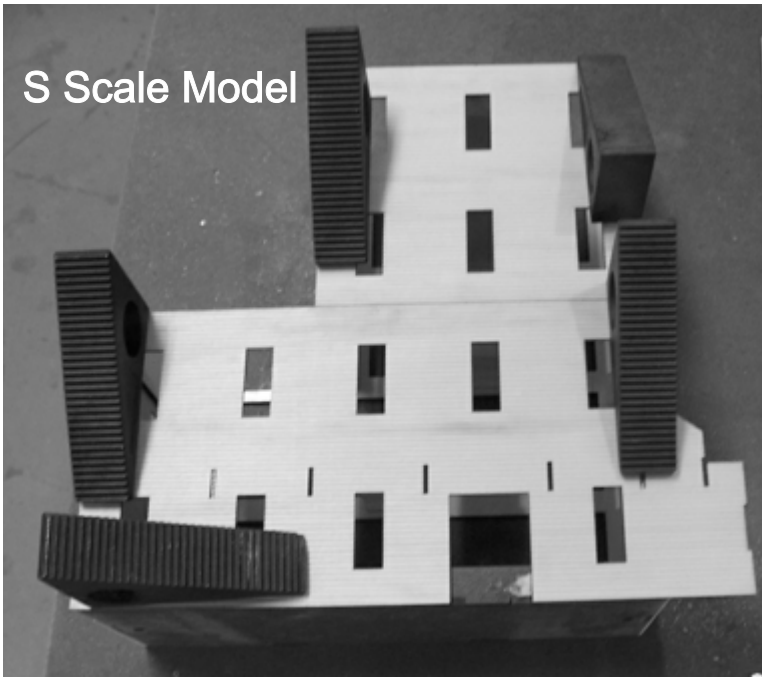
With end walls bonded to frame finish side wall in same manner. Bond top piece, sand back, test fit, then bond, weight down. After first side dry bond last side, it has stair well area that sticks out past masonite framing.



On wall above cut out baggage door before bonding.



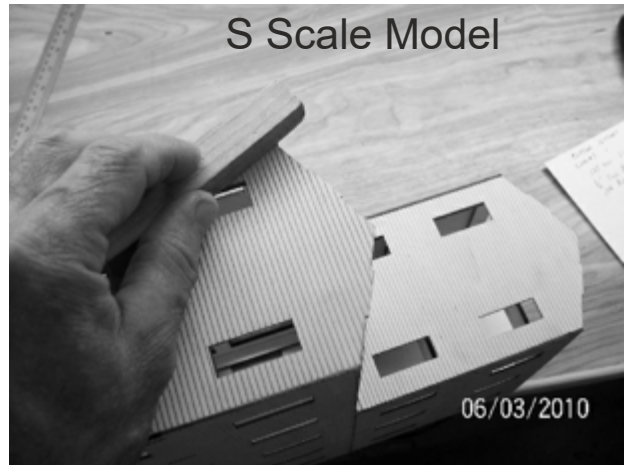
S Scale Model



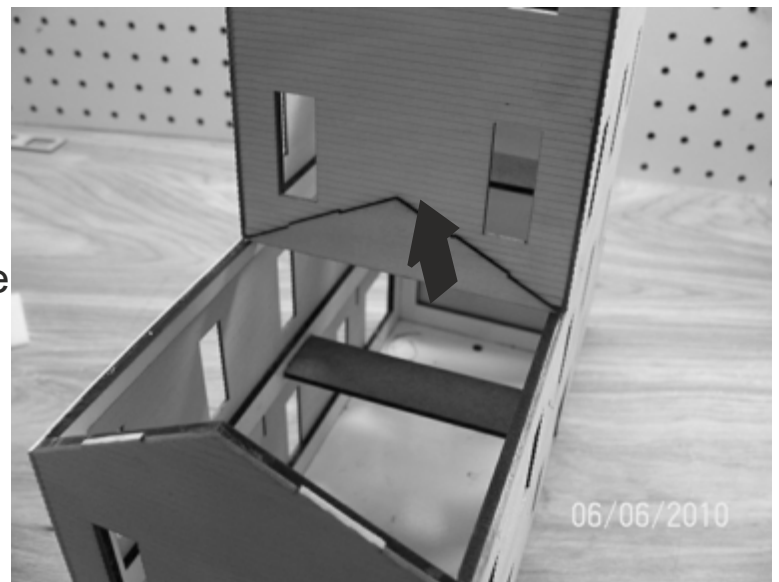
After glue dries on first side approx. 30 minutes flip over and glue last main wall. Flush left side of siding to end wall, the right side is stair way and over hangs inner structure. Weight down siding and let glue dry.

If needed after glue dries sand edges flush so angle cap fits tight, slight gap OK. Be careful not to sand to much, lightly lean sanding block so not sand face of siding. The idea is to match corners so trim fits tight.

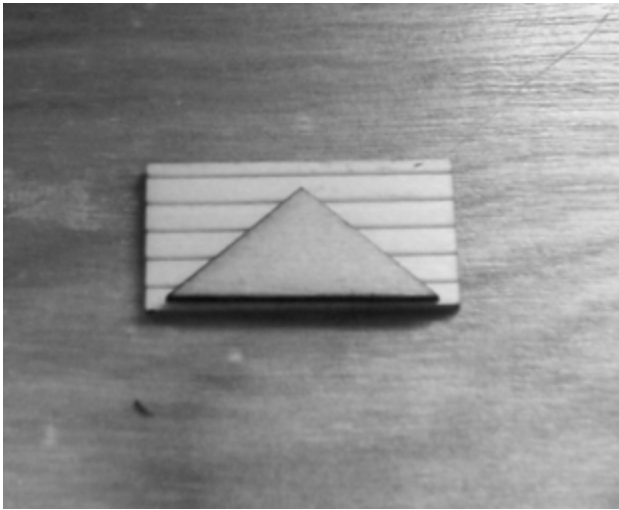
S Scale Model



Next glue roof support in as picture

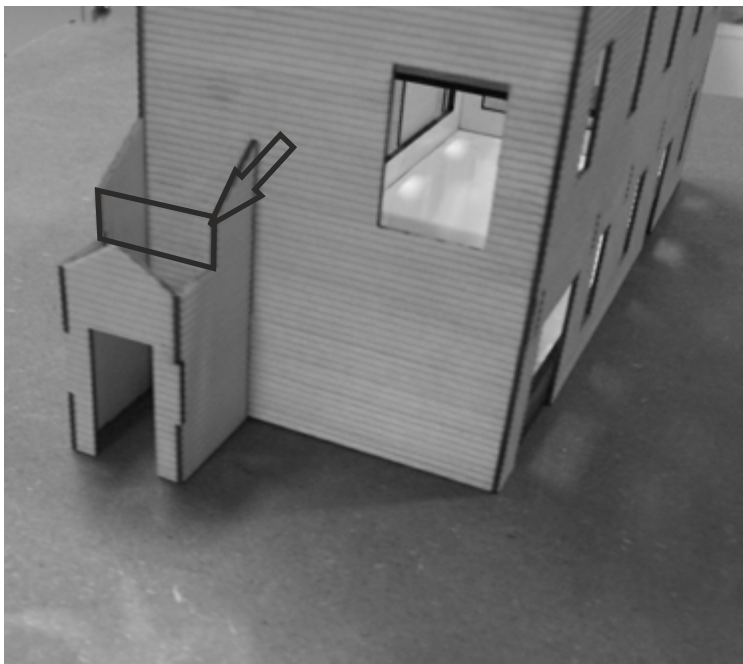
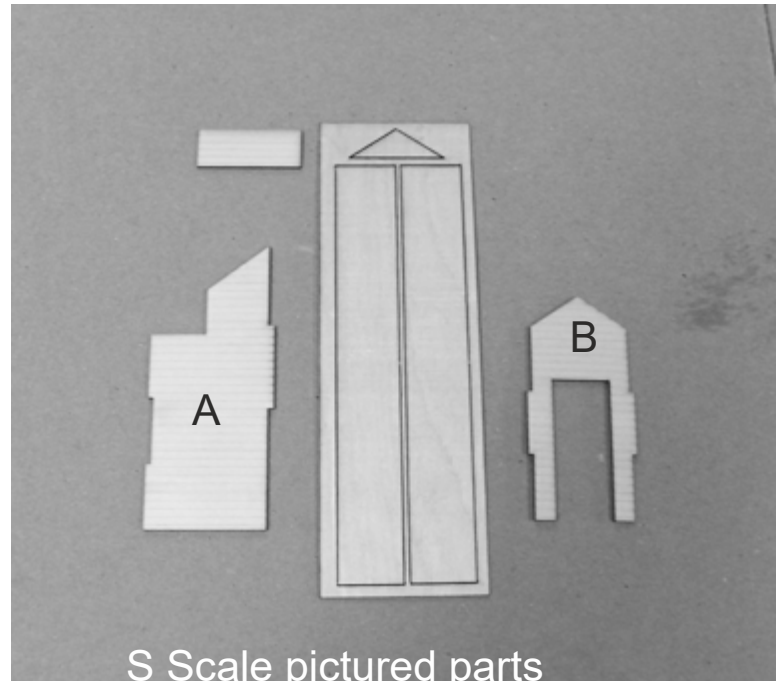


S Scale model pictured



From Siding sheet locate stair well parts as pictured to left. Bond triangle as pictured above note siding down triangle flush with bottom.

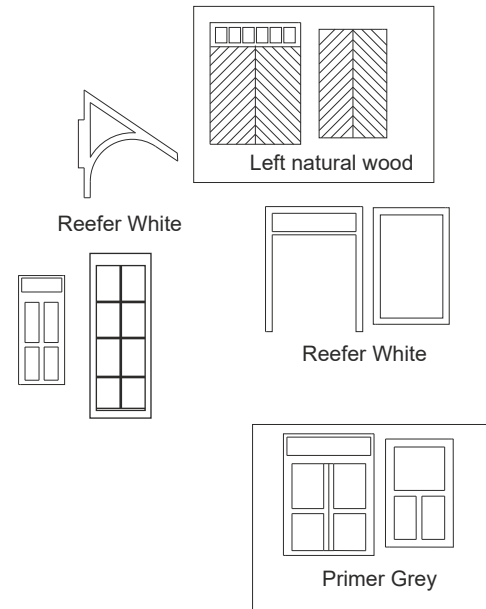
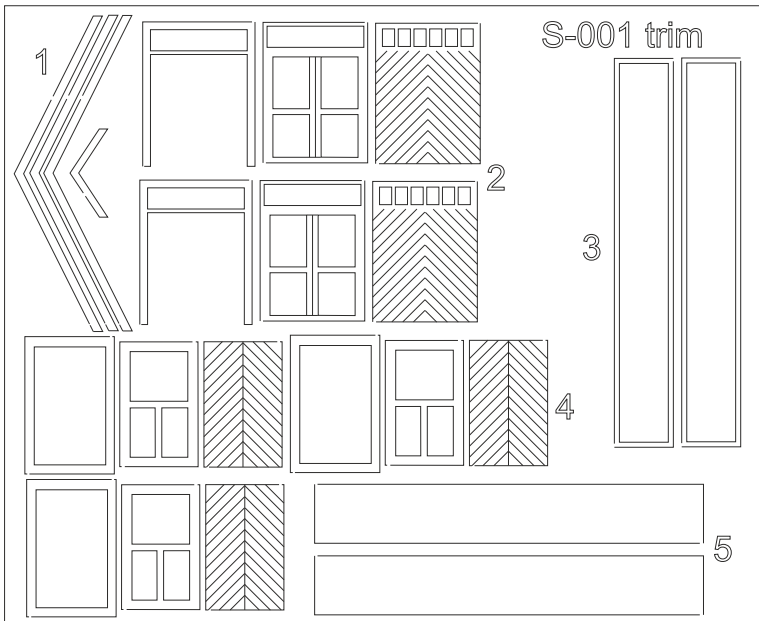
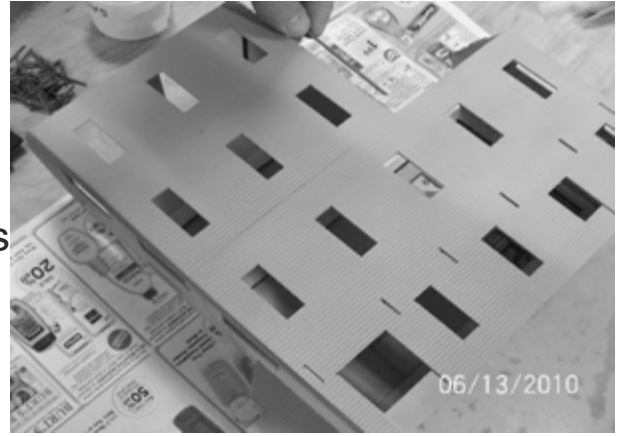
Next locate stair well parts pictured to right. They are found from siding sheet and are A&B parts pictured here. Be careful they break easy.



Next glue stair well parts as pictured. Add header that was glued above triangle out to noted header area.

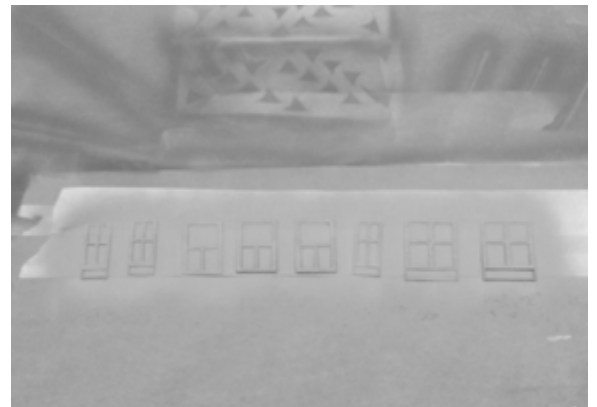


At this point in assembly it is time to paint. I used Floquil enamel based primer as main color. But 1st seal clap siding w/ light coat of glazed thinned 30% and spray with air brush. For trim and angle 3/32" to cap corners main structure I used reefer white. Below is trim sheet and colors they are spray for two tone model

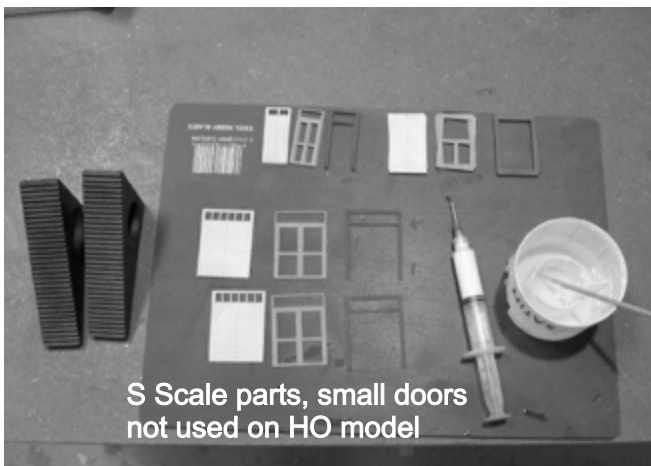
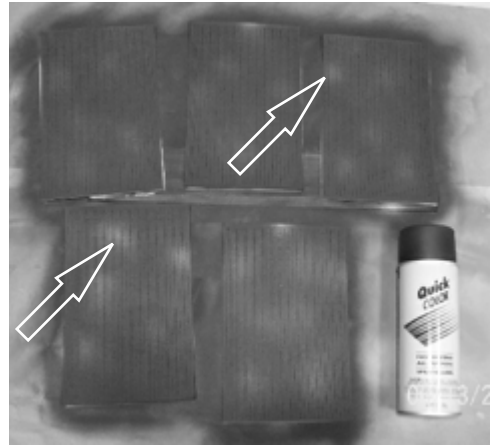


Notes parts not to scale

Next while in between coats of paint on main structure prepare trim for paint. The above trim sheet S-001 is for doors and trim, also locate 3/32 bass wood angle and plastic windows. For angle lightly sand with 320 grit paper, and doors parts cut out and sort in groups for there colors as above. Also dock roof brackets. Layout them out on doubled sided tape and spray after cleaning there required colors.

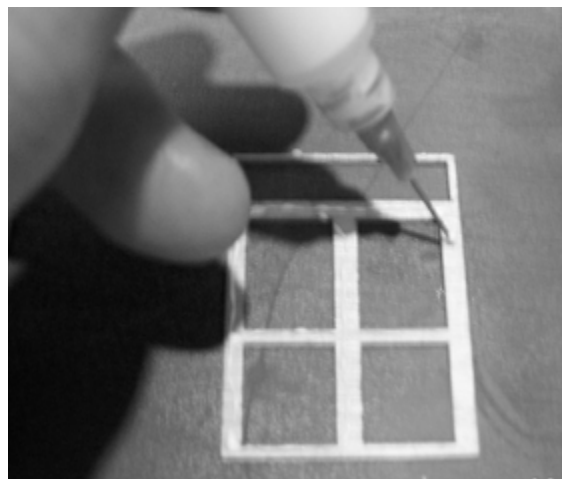


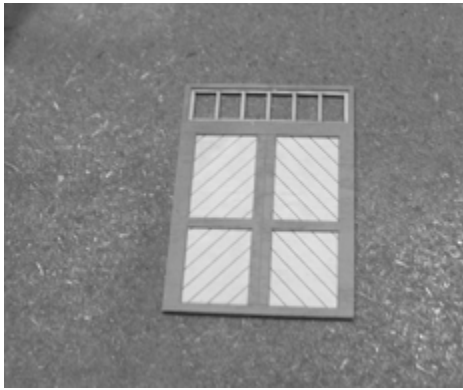
While painting lets go ahead and spray shingle sheets also. To do this lay them down flat and tape edges of back . I found at Home Depot flat black spray can enamel .99 cent a can. Spray 3-4 light coats until even coverage. Then airbrush lightly w/ grimmy black. Then the trick is some light grey and silver in small blotchy areas. Note picture to right.



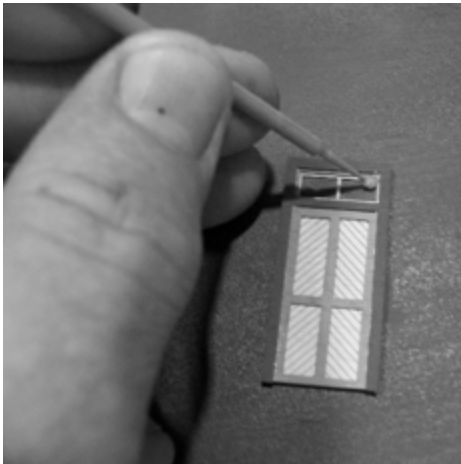
Here to left we have grouped door parts. I use white glue or Aleenes Tacky glue in needle point syringe to apply fine line of glue. Also have ready a cup of water and q-tips to clean up excess glue. Also small flat weights to press parts flat while assembling.

Dry fit match set of doors to get familiar with parts. Next apply a thin bead of glue to back of trim to be bonded.

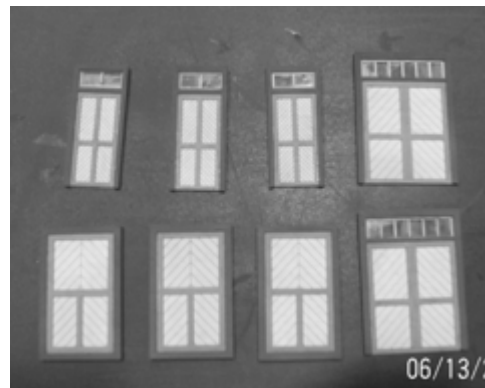




While glue is wet line up outside edges of door parts, bond layer at a time. I place piece of flat stock and press parts together for 30-45 sec then remove and clean any excess glue with wet q-tip. Then bond next layer if required, and repeat. After all doors bonded and cleaned group them in stacks and place a flat weight . Allow a hour to dry.



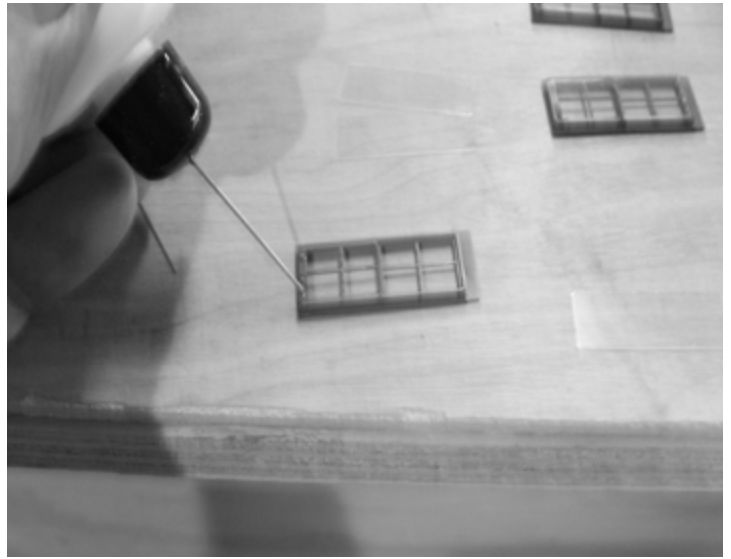
Clean excess glue with wet q-tip



Picture of doors completed

After doors have dried locate window glazing and test fit for windows at top of doors. Glazing is bonded on back of doors with tacky glue, a few drops around edges. Clean up any excess with damp q-tip.

Next bond glazing to back of 38 tall narrow windows. Use plastic cement w/needle applicator, just a few drops top and bottom. Hold glazing down for several seconds while glue tacks. Complete all parts and set a side.



Sort out 3/32 angle painted earlier and cut fit corners. Use tacky glue to bond after test fit. Clean up any excess with wet q-tip.

There are a few areas that need to trim out for canopy brackets. I found easiest to trim out after gluing. Mark this areas so not to forget them and trim w/exacto knife.



After angles bonded time to install doors and windows. I found if your going to do any weathering do so now. Use tacking glue with needle applicator, a few drops at corners and edges of parts works fine. Any excess glue clean up with q-tip.

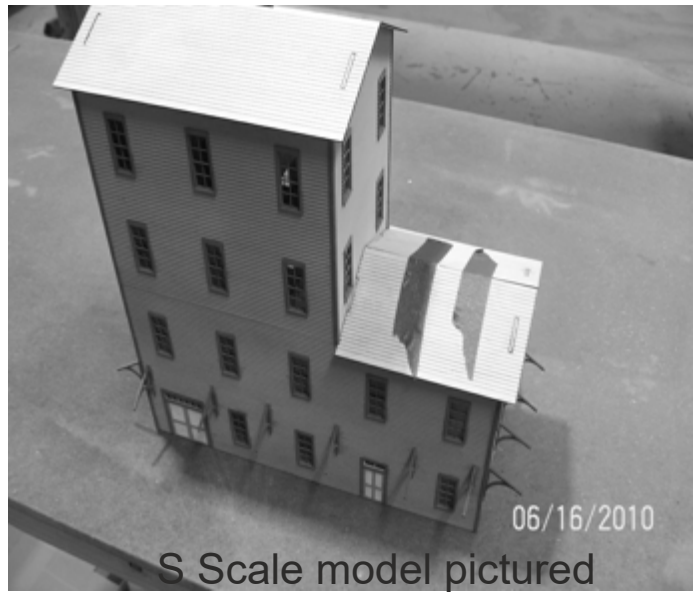


Next glue the canopy brackets in precut slots. Clean up any excess with q-tip.

As you glue brackets be sure square up before glue dries.



Next lets bond upper and lower roof. Scribes up, test fit then glue with tacky glue. Tape and weight down if needed. These part #,s 1&2 from trim sheet.



Next bond canopy, start with end first. Check fit then bond with tacky glue. This is part # 3 from roof sheet.

Next proceed to sides of canopy as you see I used clothes pins to hold down on brackets. Part #5



Next bond small roof part at end of short side canopy. Test fit before gluing. Part #8

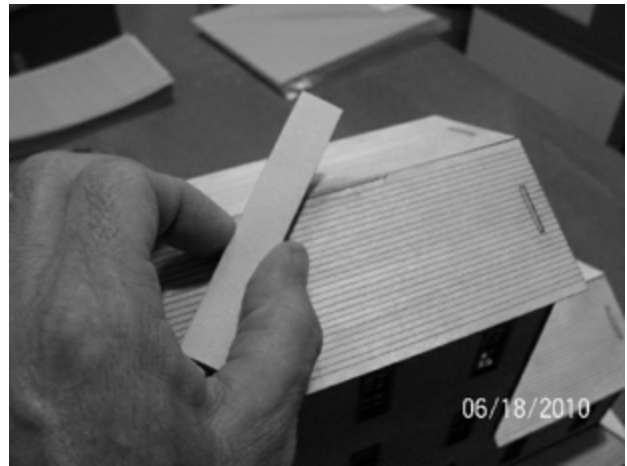


With sanding block you may need sand trim flush with top of wall before installing roof in this area. Part #6 over door entry.



Install the last of roof parts in door well area. Part #7 wider first scribe goes down on these parts for first row of shingles.

Sand roof areas smooth and seal with coat of floquil glaze with brush is fine. Let dry 24 hours before laying shingles



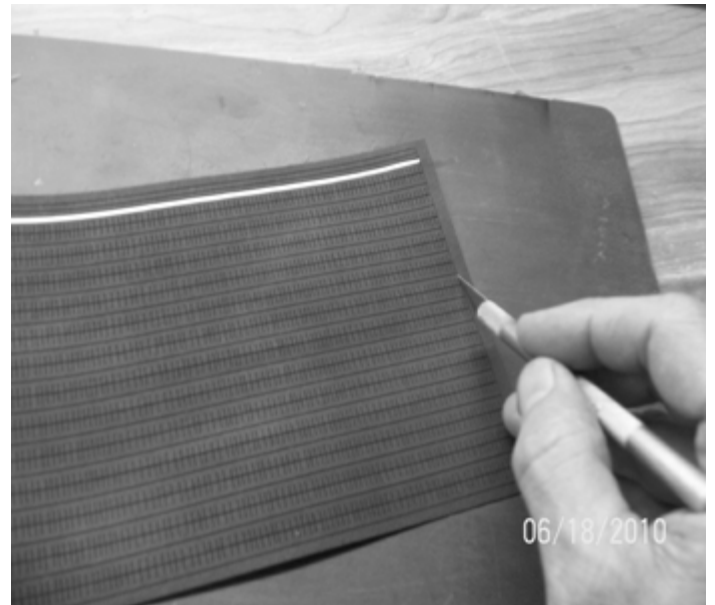
Don,t forget canopy peaks also send smooth and flush up. Clean roof tops off and blow off with air, at this point your ready for shingles. I like to put a coat sealer on and let dry over night before shingling roof. Use clear coat or lacquer sanding sealer to do this.

Here we start laying shingles, start at bottom working your way up on scribed lines. Alternate from left to right to keep pattern of shingles mixed as you work your way up roof.



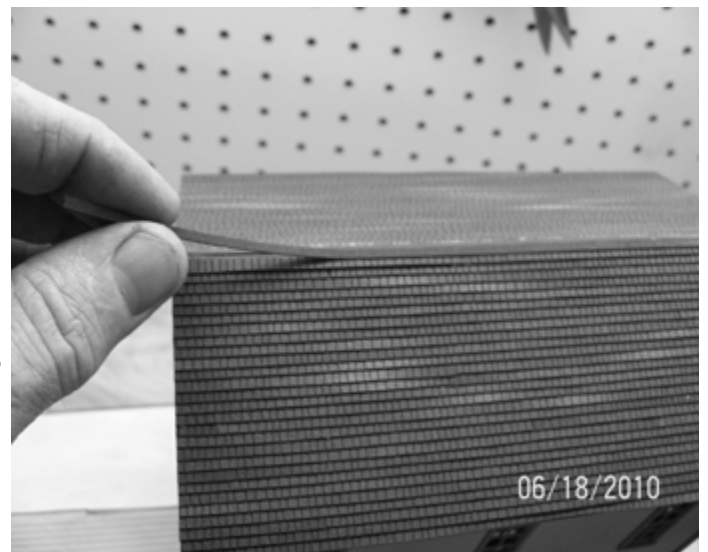


As you pull strips of shingles from sheet you find that a light scribe with #11 x-acto blade maybe required in some areas.

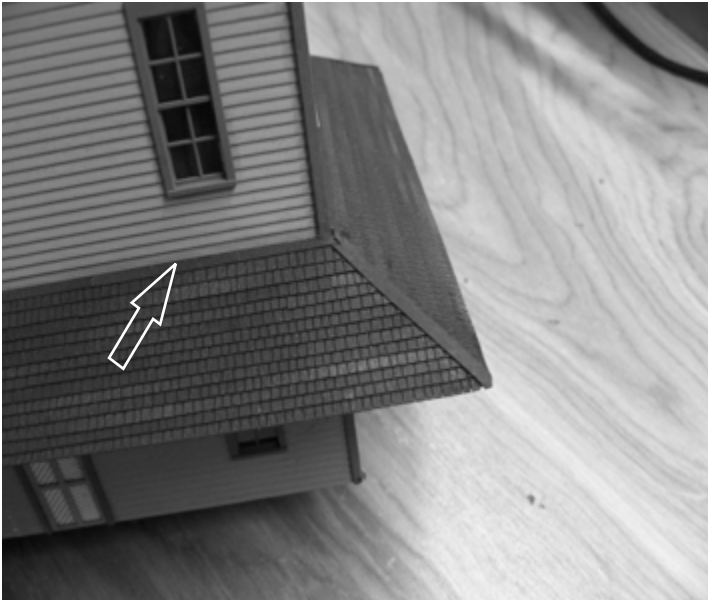


A light sanding with block at ends will clean up ends

Once both sides shingled to peak finish peak with scraps from edges of shingle sheet.



Here we see canopy finished note flashing at top from shingle sheet.



Here we see detail of stair well area finished.

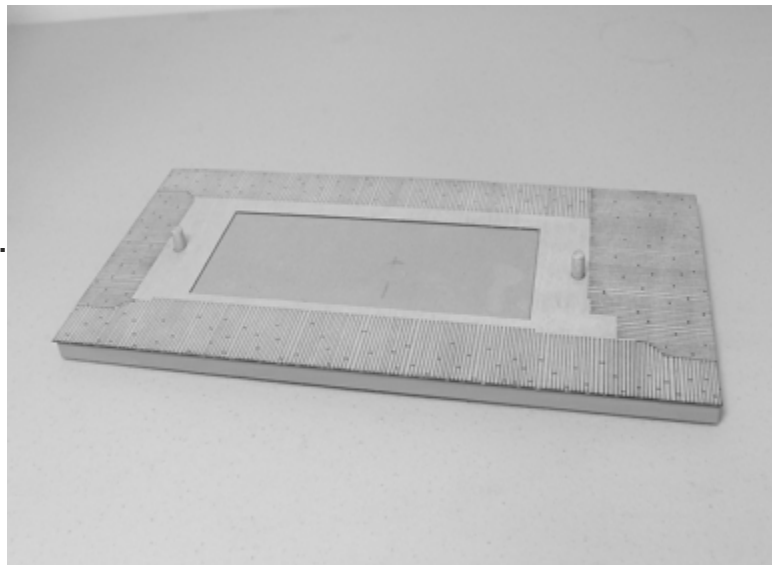


Now time to trim out building arrows point to final details of model to be added

Next lets assemble and paint base.  
First the pins need to be installed  
but first sand a chamber top so  
model sets over pins easier. Then  
place as shown in photo and tap  
2 pins in to holes.

Seal edges of wood with sealer,  
I found rust-oleum in camouflage  
colors#1917 KHAKI works great to spray edges.

Once paint dries bond the scribe decking on base.



Locate frame work from sign  
glue together then paint. Below  
cut out on line and past into  
sign frame and mount on  
Building.

Add your supper details  
and your complete.

Picklers Warehouse

Picklers Warehouse

Picklers Warehouse