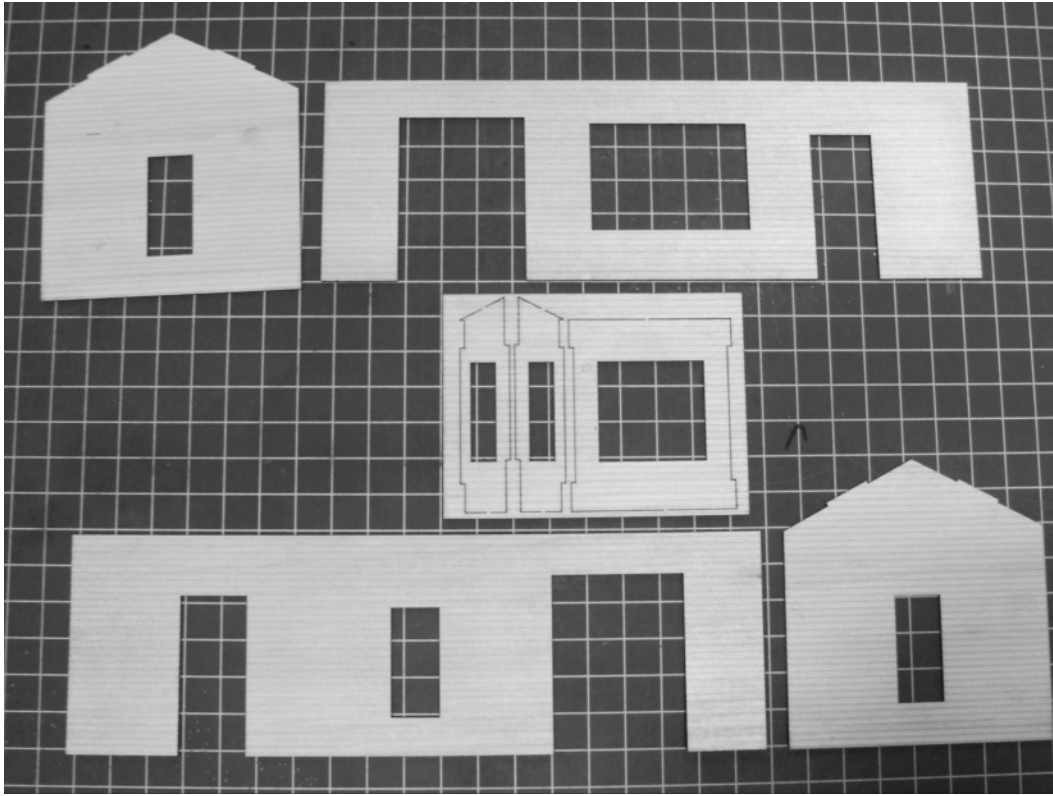


Chapter 1.5

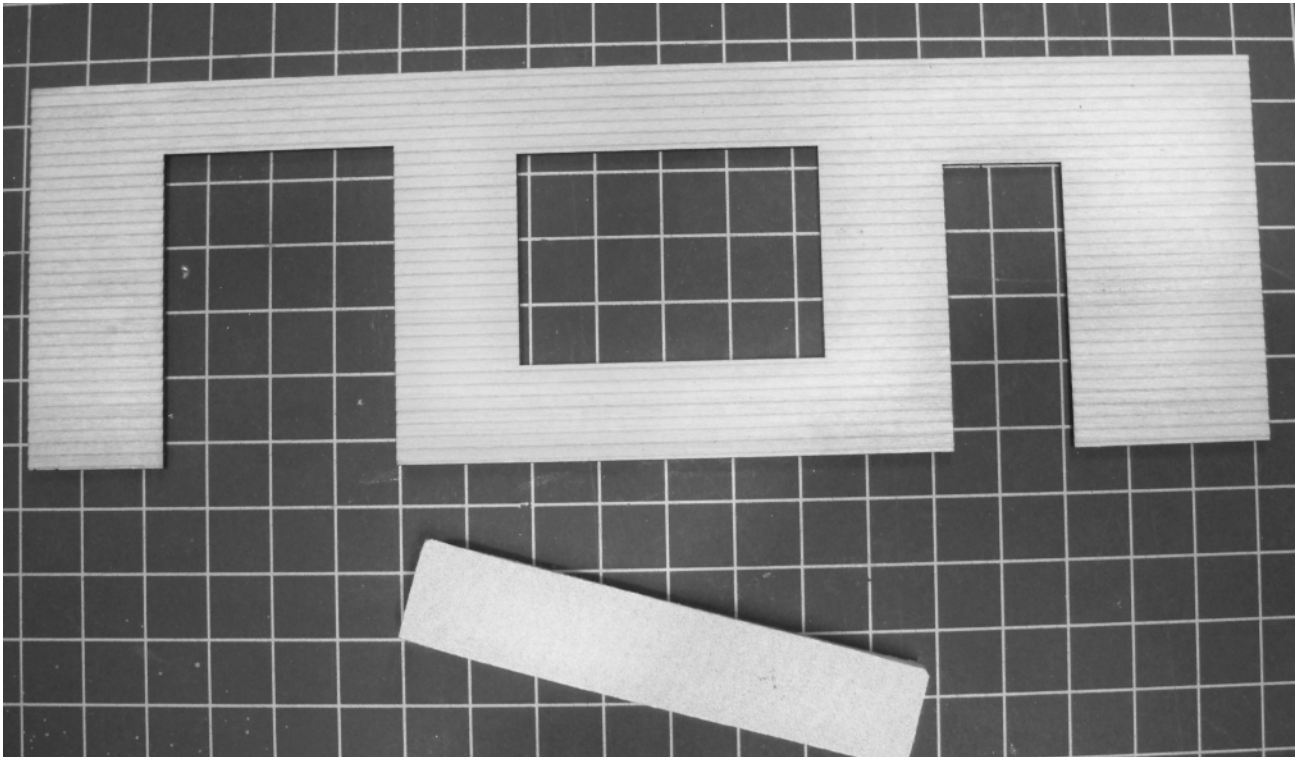
Siding Detail

This is an in depth article on building the Altoona Model Works O-scale Branchline Station. This Series will cover the construction in much detail to assist you. We will cover from box to layout the process of creating a museum quality model.

Chapter 1.5 Siding Detail

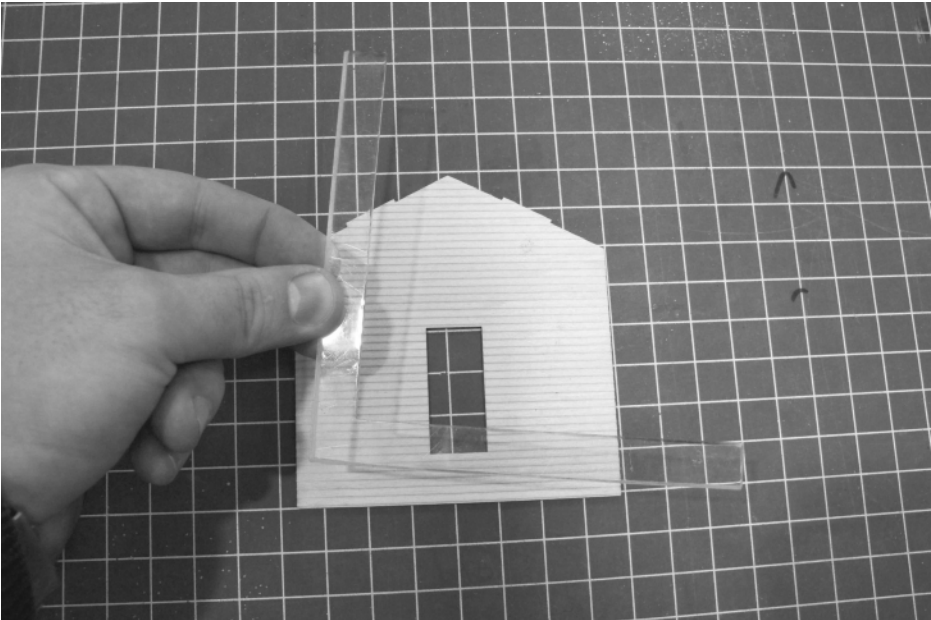


Now we are ready for our siding. First if your parts need to be cut out using your X-acto knife cut the spurs and with care remove the siding.



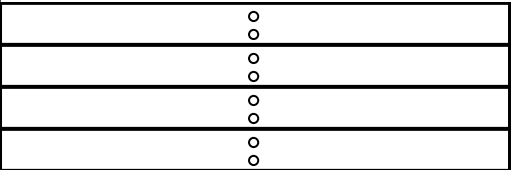
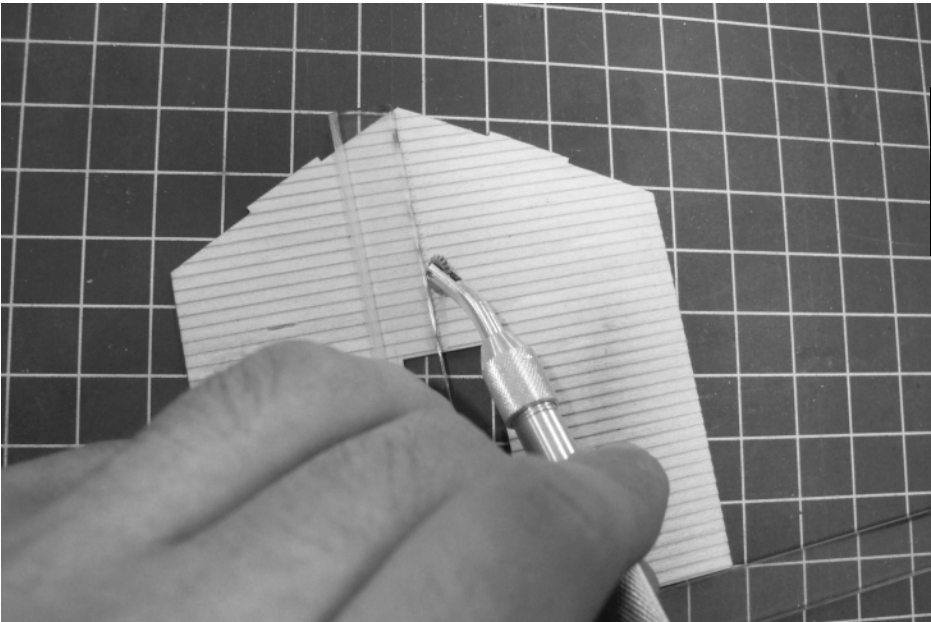
First we will want to use our small sanding block with fine sand paper to sand all sides of our part. Sanding lightly not to alter the dimensions or detail. Once complete brush away all dust or debris from works area .

Chapter 1.5 Siding Detail



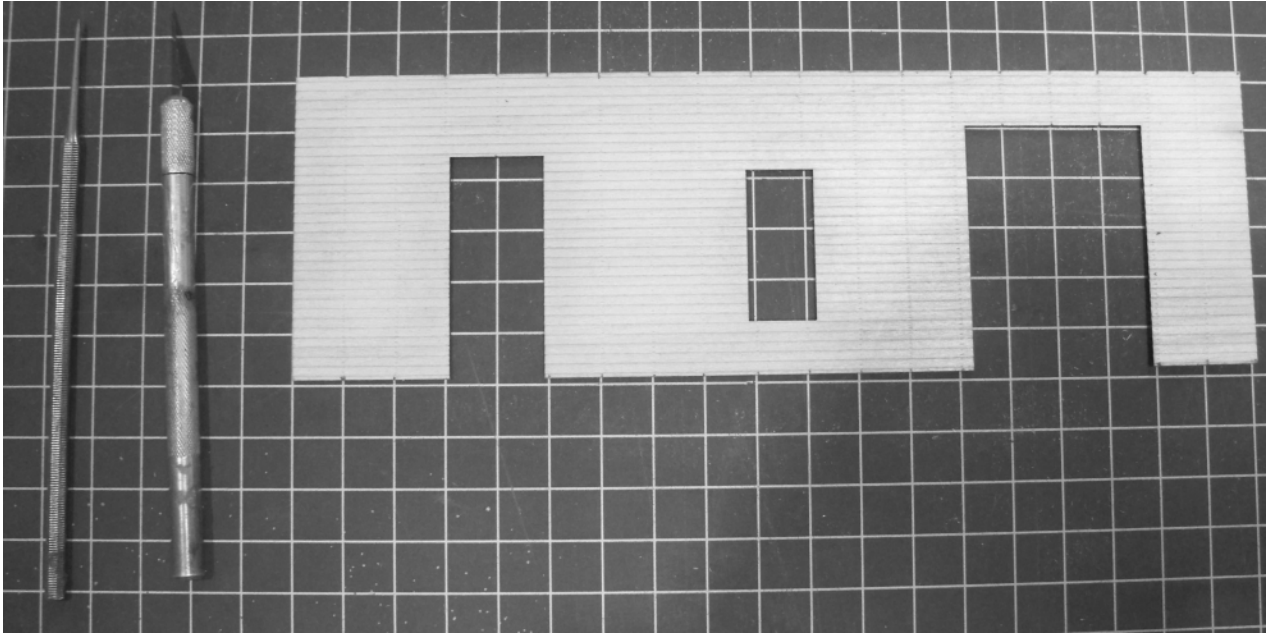
- Nail Spacing from stud to stud:
- HO .275"
- S Scale.375"
- O Scale 1/2"

Once all parts are sanded and cleaned we are ready for siding detail. To make nail holes we will use a ruler, a square, a pencil and a medium sized rivet maker. We use the square to mark out our stud to stud distances. We use our square by placing the lower portion along the bottom edge of our wall. Then sliding it accordingly from mark to mark creating parallel and equal spaced nail details.



When using the rivet tool, to make the nails on the siding, it is best to use a scrap piece or the reverse side to practice making the nails, you will want to check how hard you press as each kit and it's wood type may differ resulting in using different levels in pressure. I also recommend practicing to develop your own techniques.

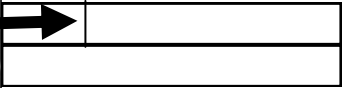
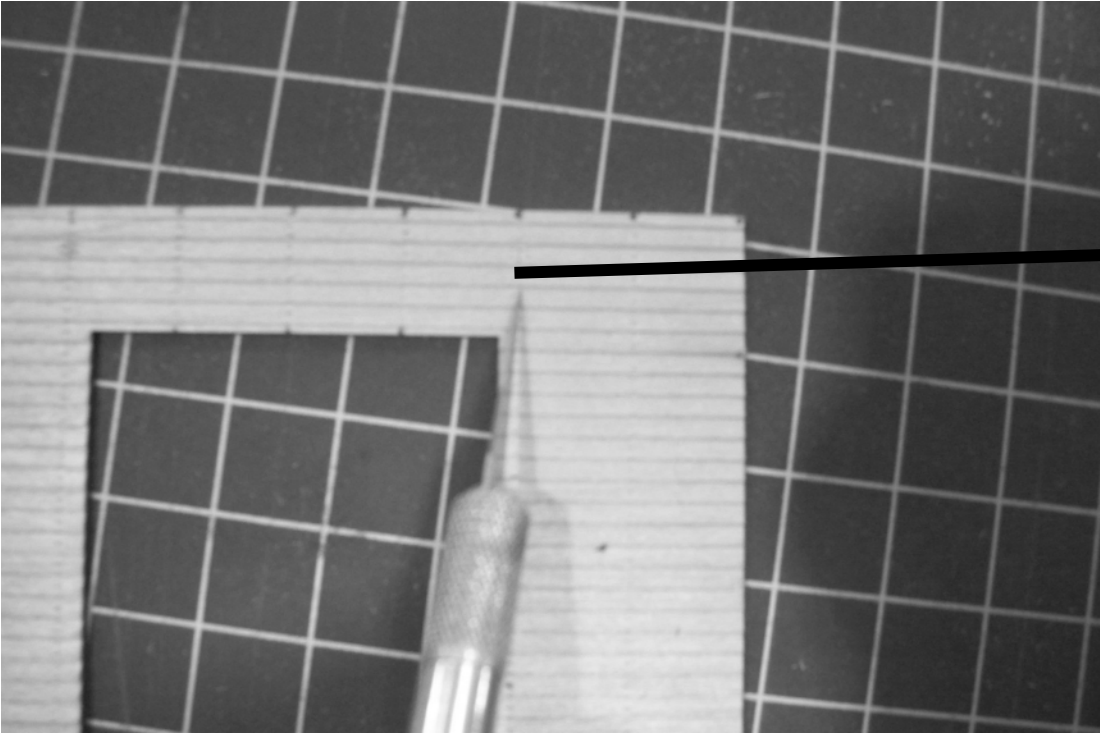
Chapter 1.5 Siding Detail



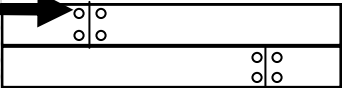
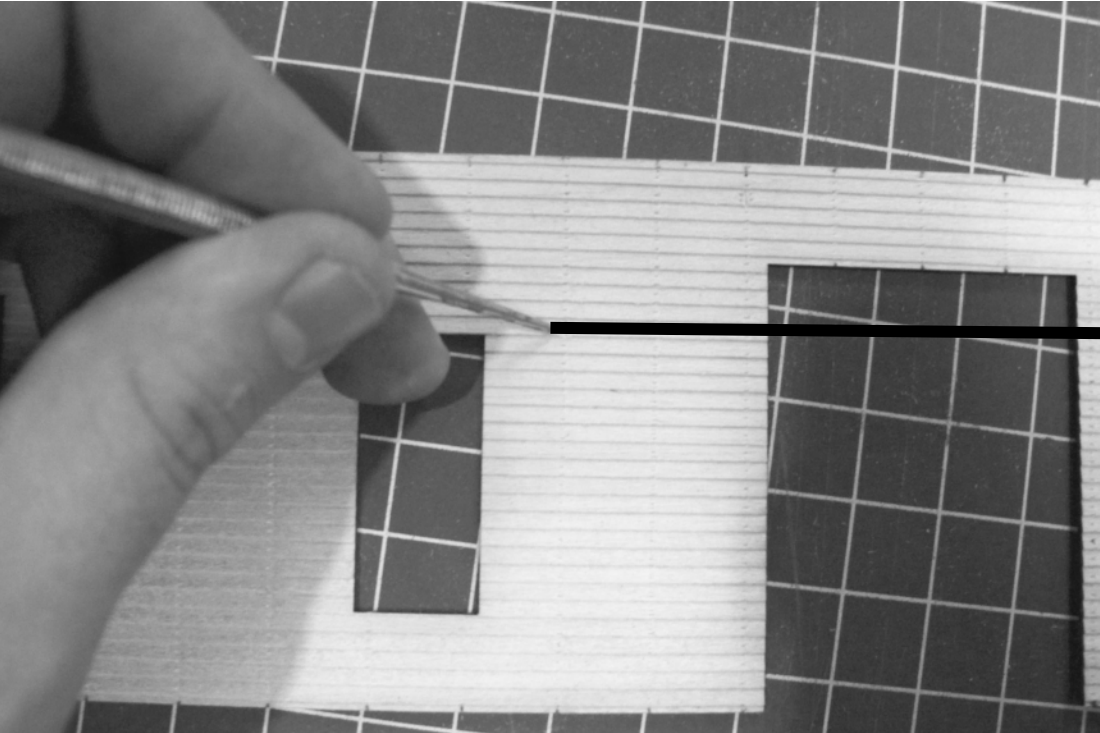
After you have completed making your nail holes:

Siding whether clapboard or vertical style it is typically produced in standard lengths. To add realism to your model select a few clapboards on each wall to divide into sections. The reason for only selecting a few is to prevent your model from looking too busy. Typically siding is produced in 8' or 16' sections. Using a knife blade scribe your divisions accordingly. We then use our pick tool to add two nail holes on either side of the dividing line. *Refer to next page for reference.*

Chapter 1.5 Siding Detail



Making your division line using your X-acto Knife



Adding two nail holes on either side of your dividing line.

Chapter 1.5 Siding Detail

Thank You for visiting our Help Link. Please check back for more kits, news and updates.

altoonamodelworks.us

How to navigate our series:

For ease of downloading and navigation our series are divided by topic into chapters. For topic you will select a chapter for downloaded located at:

http://altoonamodelworks.us/Cart/help_link.php

On this page you will click on the link to the PDF of your choice. Once selected you may download, print or return to: altoonamodelworks.us as often as you need to. Since the Modeler's Help Link will be provided to you in series be sure to check back for additional chapters and new building projects.

[INTRODUCTION: Navigation of site/ tools/ glues](#)

[CHAPTER 1: Assembly of Masonite/Sub-structure](#)

[CHAPTER 1.5 \(OPTIONAL\) SIDING DETAILS: Nails, Making Divided Clapboard siding, and Loose Siding](#)

[Chapter 2: Siding](#)

[Chapter 3: Painting Chapter](#)

[4: Trim and Detail Chapter](#)

[5: Roof Assembly](#)