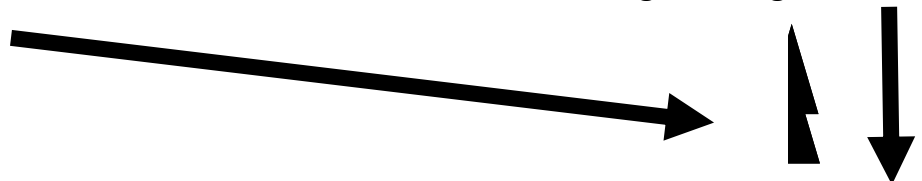


Chapter 2

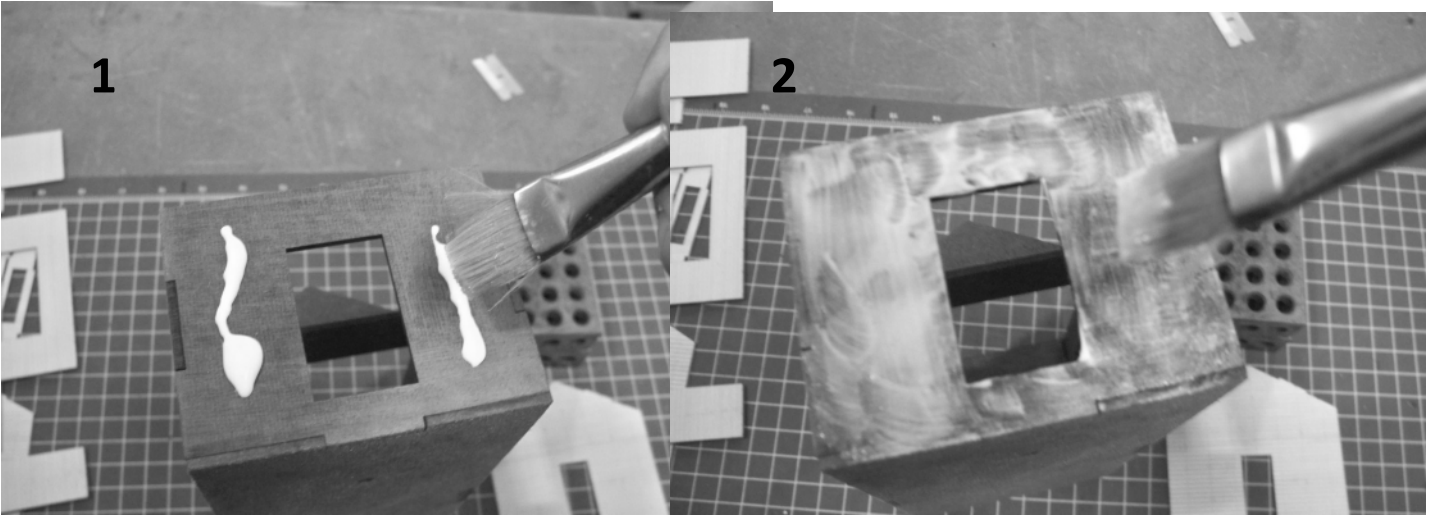
Assembly of Siding

This is an in depth article on building the Altoona Model Works O-scale Branchline Station. This Series will cover the construction in much detail to assist you. We will cover from box to layout the process of creating a museum quality model.

*Note before gluing always double check to make sure the outside siding is facing down to match the rest of the parts



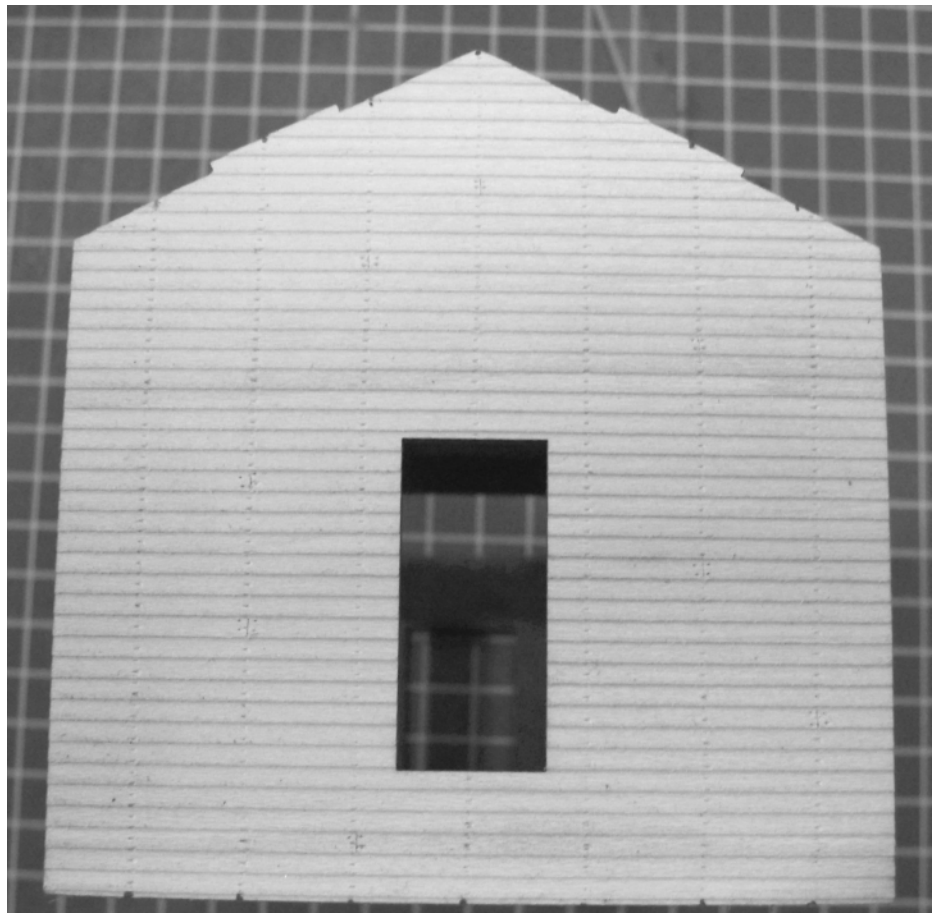
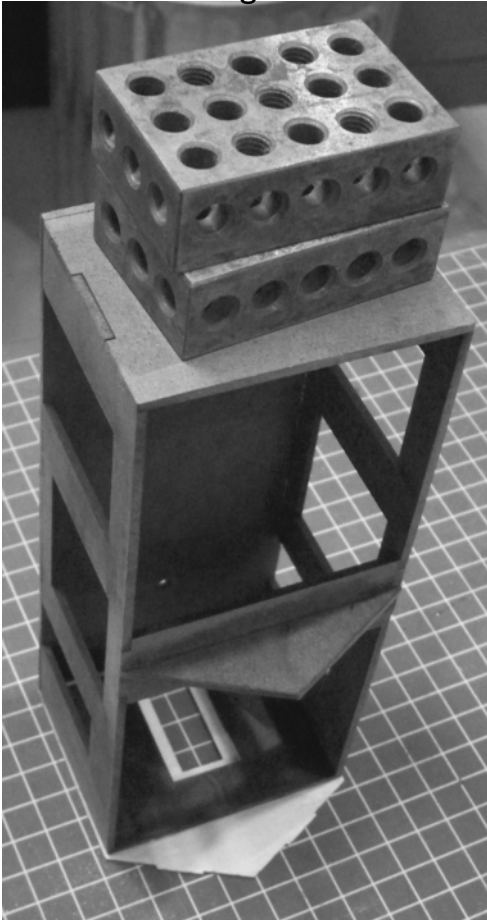
Chapter 2 Siding



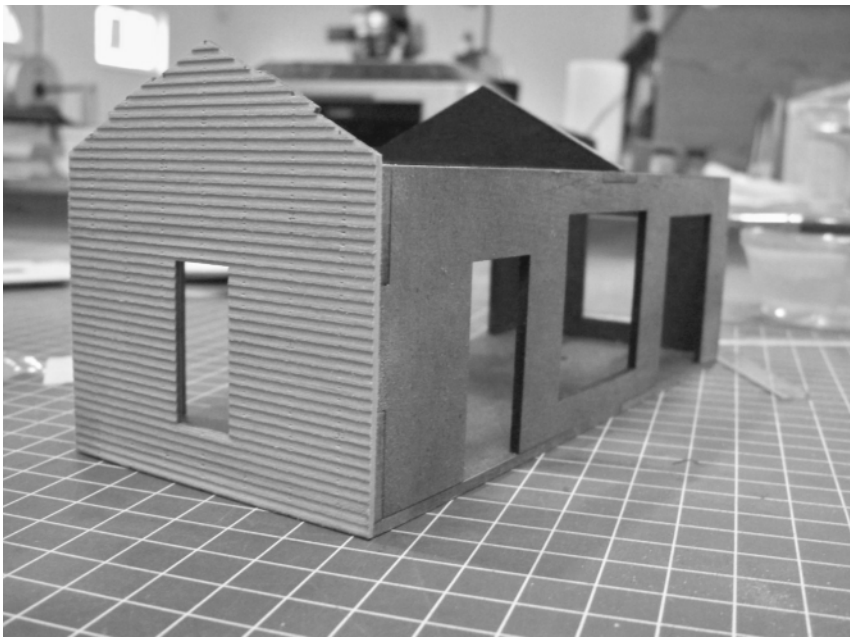
As we prepare to install our siding to our Masonite sub-structure we apply white glue as shown in picture one above. Be sure to and enough to glaze the surface, but not too much as oozing will occur. Use a brush dipped in water to evenly coat the Masonite side. Be sure to evenly and squarely place the siding on the Masonite.

Below: With the siding applied we place the wall face down with weights placed on the opposite side to hold the parts in place while the glue dries. It is advised to allow up to an hour for each wall to dry. *

Check siding for the first couple of minutes does not move while glue is setting up

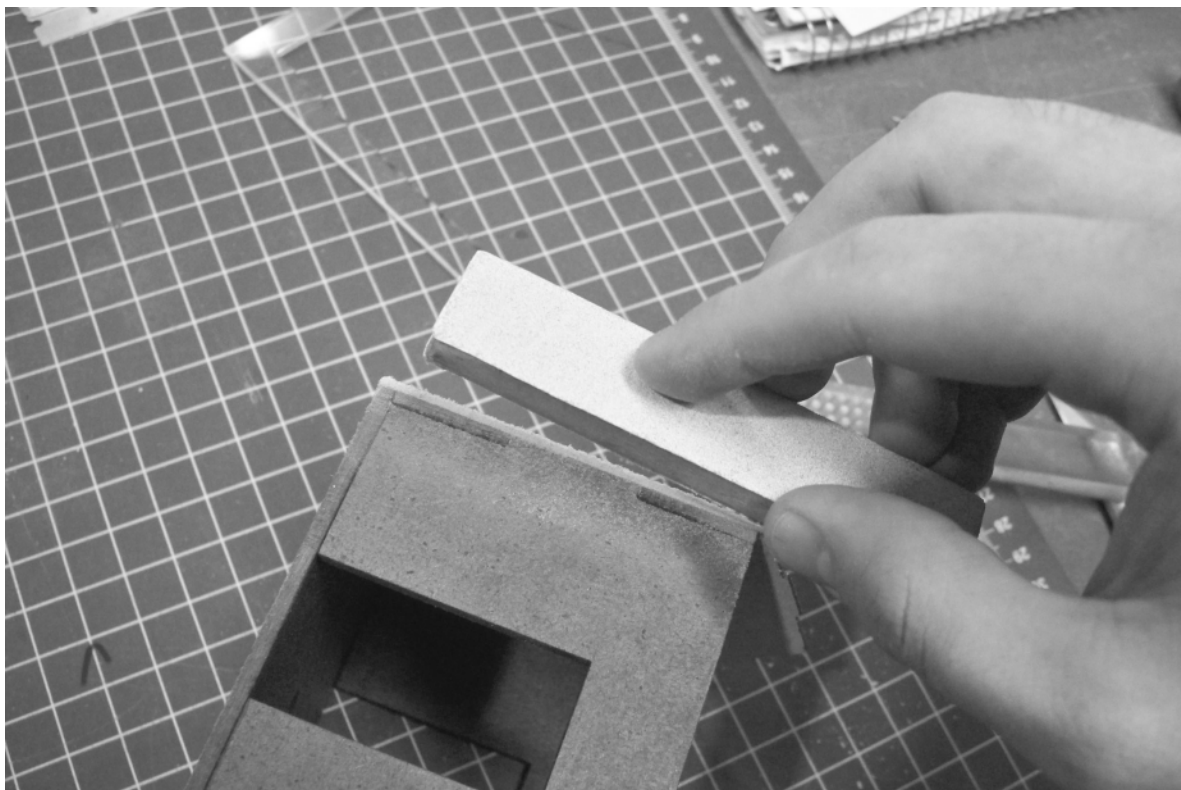


Chapter 2 Siding

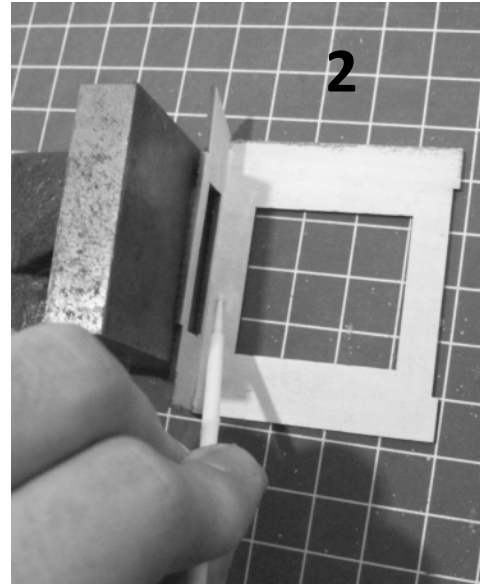
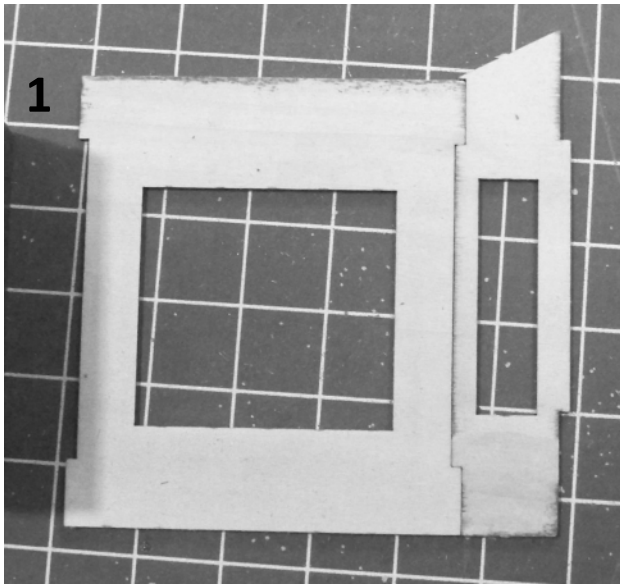


Now that the glue has dried, you will notice a little overhang on each side of the Masonite sub-structure. It's okay; take your sanding block and sand lightly in one direction the siding flush or even with the sub-structure.

Now repeat this process for the remaining sides.



Chapter 2 Siding



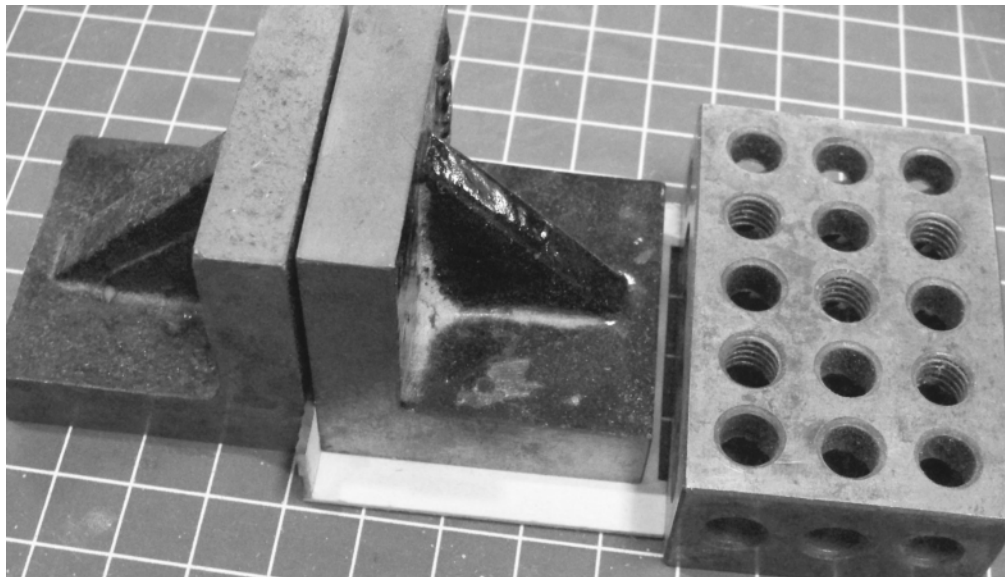
*Note before gluing always double check to make sure the outside siding is facing down to match the rest of the parts



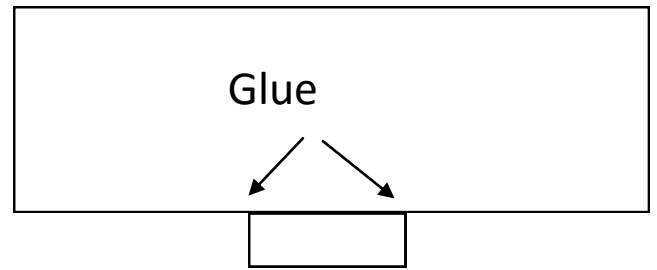
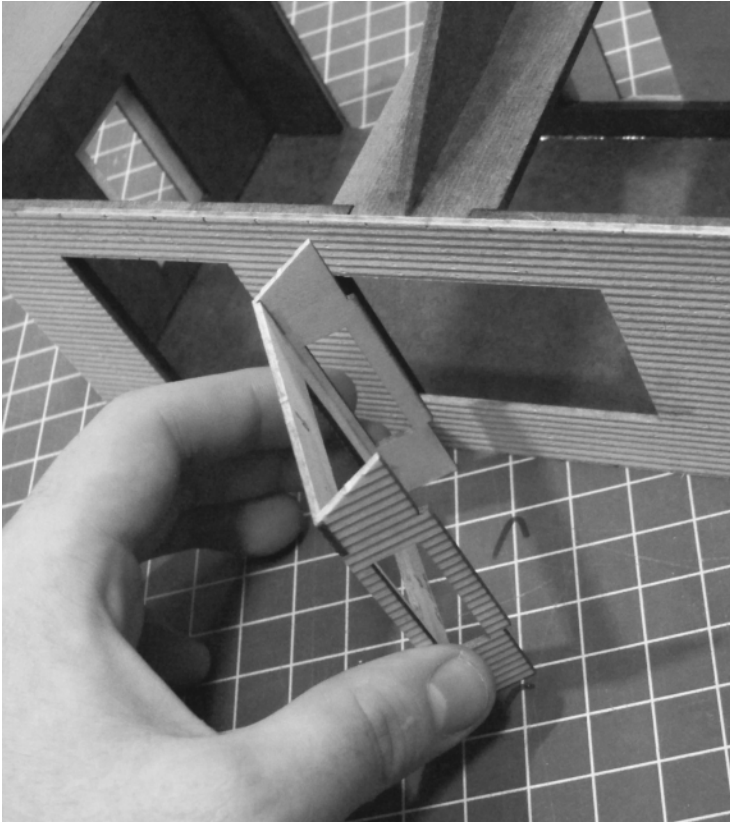
To install the bay window we will want to test fit the front wall with the side walls as shown in the first picture above. Make sure siding is in correct position.

To glue the side walls to the front wall we will need to use a square to brace and hold the wall as we apply white glue using a micro brush as shown in picture two.

Repeat the process for the second side wall using the micro brush or Qtip to apply the glue. Once both walls are glued we will use the weights as shown below to keep both side walls square as the white glue dries. You will want to wait about an hour for the white glue to set up.

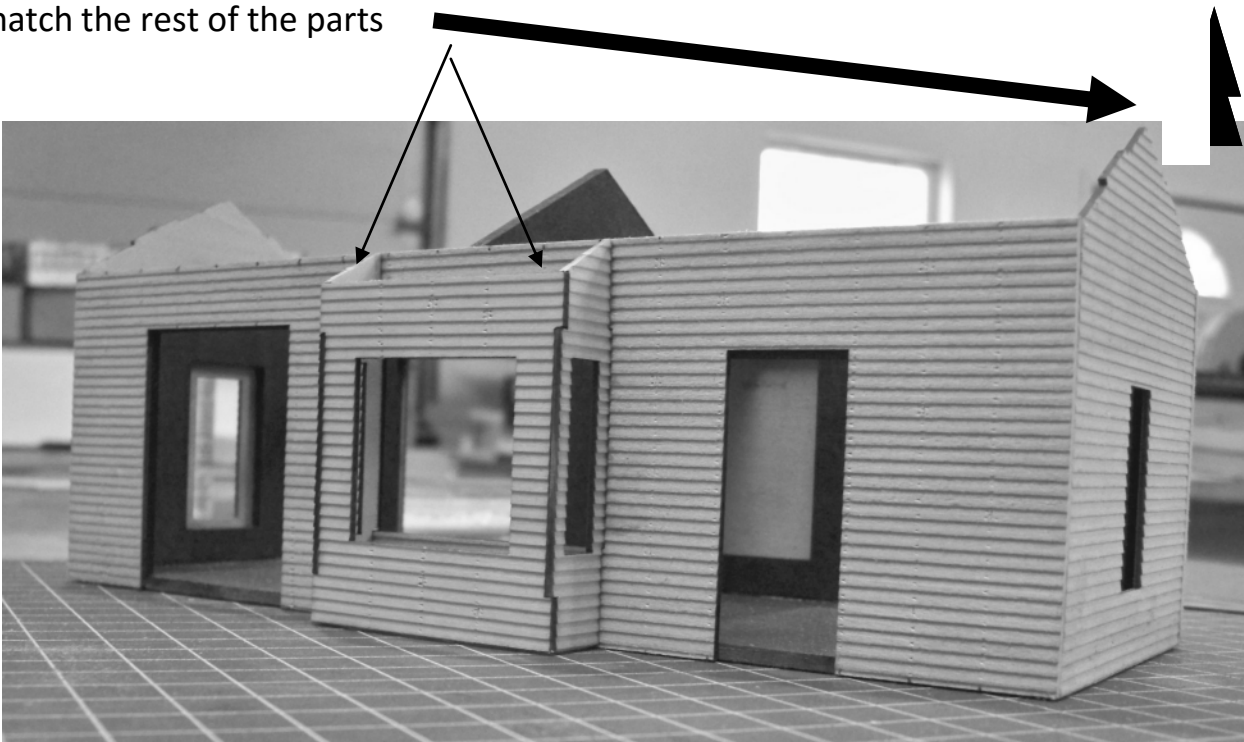


Chapter 2 Siding



Now that your bay window walls have set up. We will want to test fit the walls to the main building. Once you are satisfied with the fit you are ready to glue the bay window into position. Fit the tabbed sides into position and apply white glue as shown in the above diagram.

*Note before gluing always double check to make sure the outside siding is facing down to match the rest of the parts



Thank You for visiting our Help Link. Please check back for more kits, news and updates.

altoonamodelworks.us

How to navigate our series:

For ease of downloading and navigation our series are divided by topic into chapters. For topic you will select a chapter for downloaded located at:

http://altoonamodelworks.us/Cart/help_link.php

On this page you will click on the link to the PDF of your choice. Once selected you may download, print or return to: altoonamodelworks.us as often as you need to. Since the Modeler's Help Link will be provided to you in series be sure to check back for additional chapters and new building projects.

[INTRODUCTION: Navigation of site/ tools/ glues](#)

[CHAPTER 1: Assembly of Masonite/Sub-structure](#)

[CHAPTER 1.5 \(OPTIONAL\) SIDING DETAILS: Nails, Making Divided Clapboard siding, and Loose Siding](#)

[Chapter 2: Siding](#)

[Chapter 3: Painting Chapter](#)

[4: Trim and Detail Chapter](#)

[5: Roof Assembly](#)