

Chapter 3

Painting

This is an in depth article on building the Altoona Model Works O-scale Branchline Station. This Series will cover the construction in much detail to assist you. We will cover from box to layout the process of creating a museum quality model.

Recommendations: Do not use water based paints on wood.

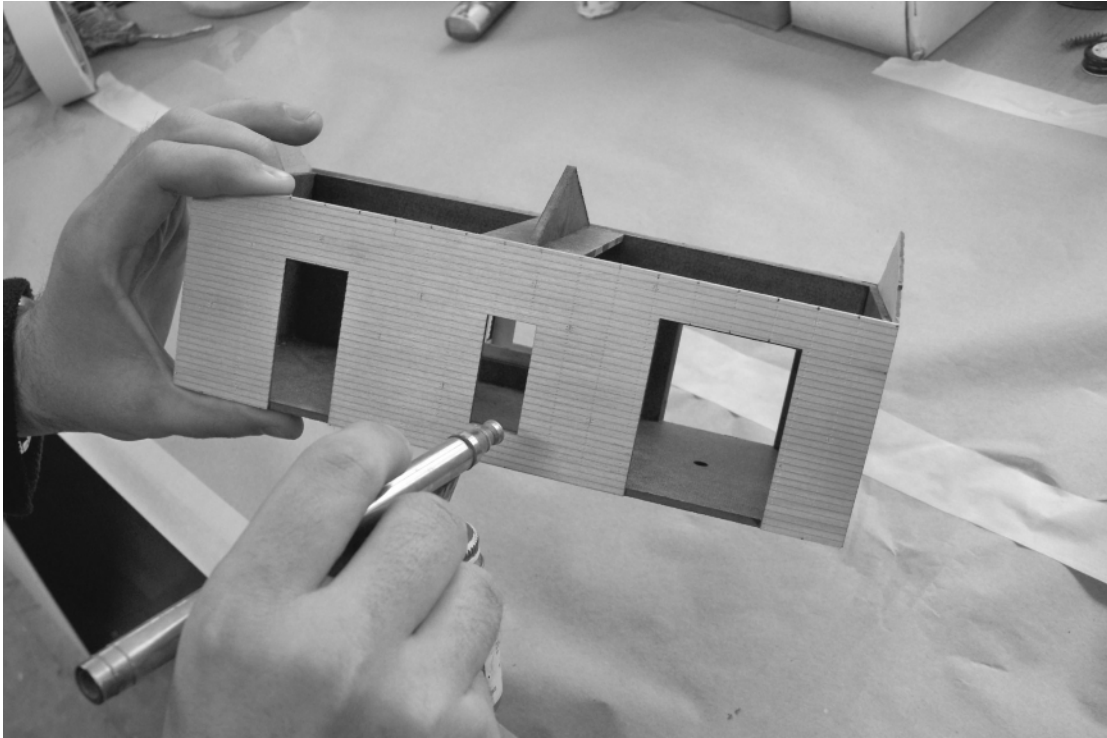
When spraying Reduce Glaze by 40%-50% using reducer

When spraying Floquil Paint reduce by 15%-30% using reducer

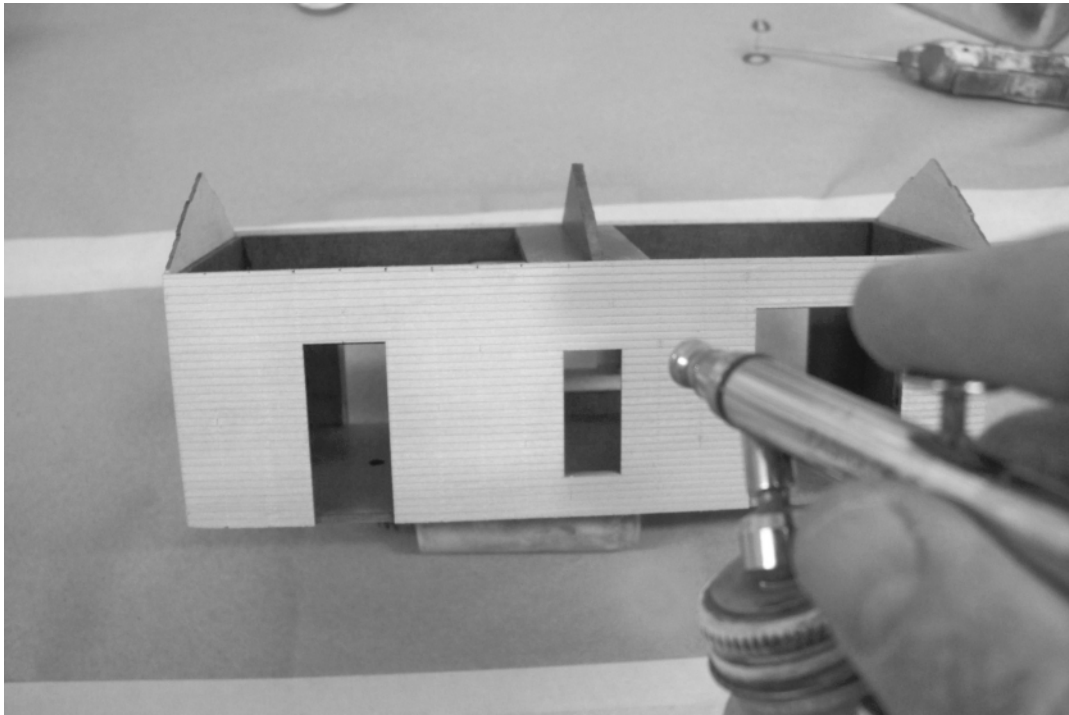
We reduce the paint so that it keeps the grain of the wood apparent and allows paint to flow from air brush.

Wait 24hrs between sprays

Chapter 3 Painting

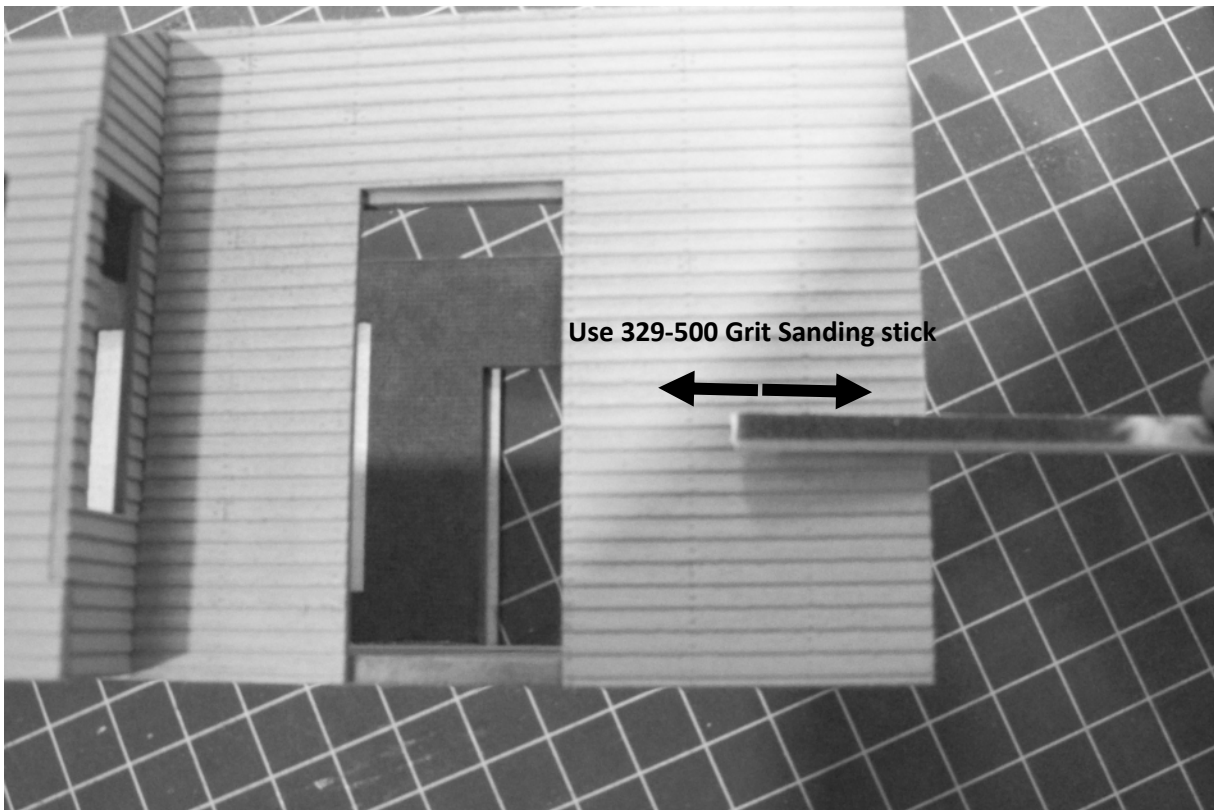
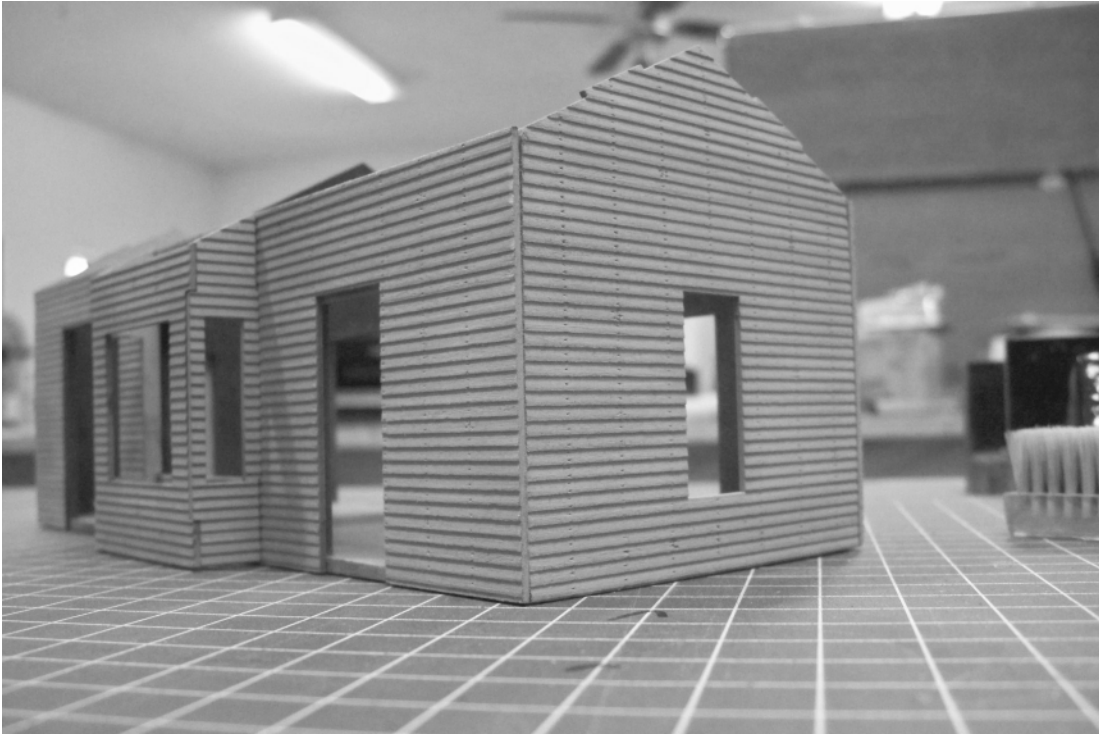


Above we use our air brush to apply glaze. For the best results remember to follow your application directions usually found on the side of your paint bottle. Since the glaze is clear it is important to use care when applying. Spray the model, completely. You will want to evenly coat the siding but not soaking wet. Let dry over night for the glaze to dry before applying your first coat of paint. We typically thin the paint with thinner when spraying 10%-30%



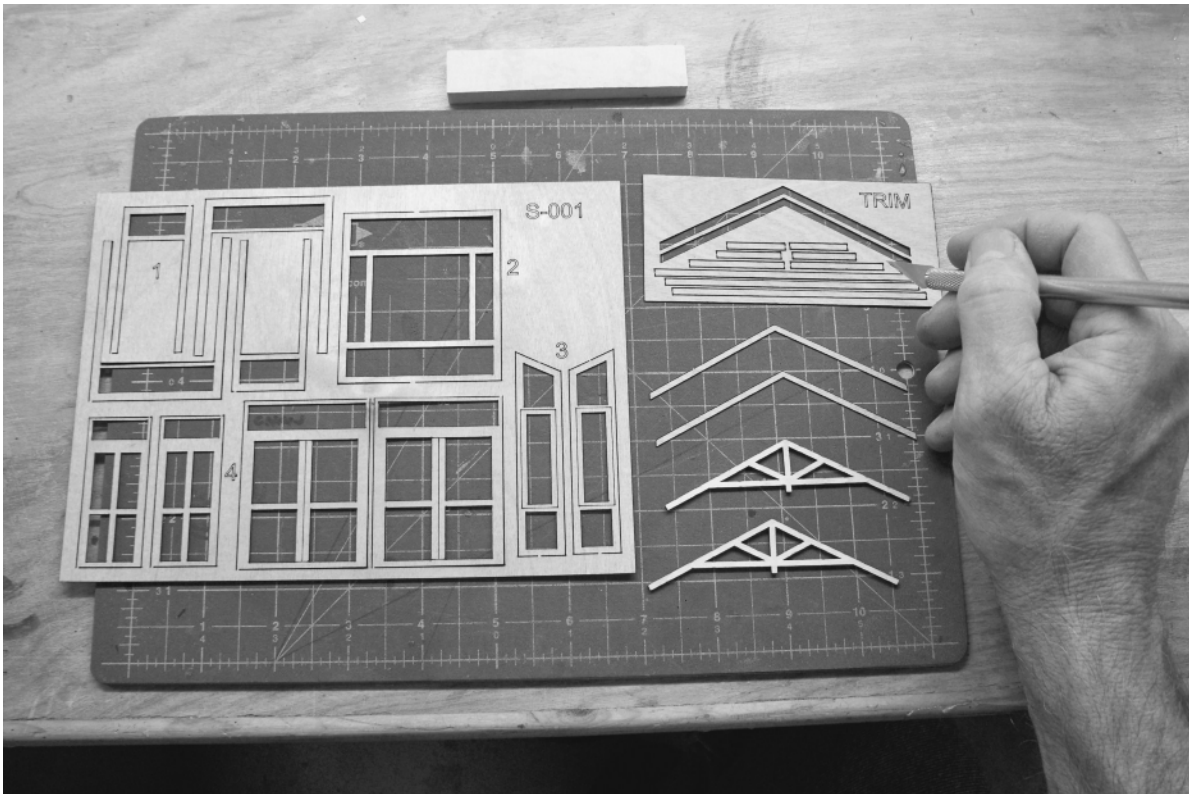
Now that your glaze has dried, use a soft brush or tooth brush along the grain to clean any particles from the siding. This is the time to repair any defects and sand the repair smooth using 320-500 grit sand paper as next page shows. It is time to spray your first coat of paint. Flow the paint on evenly and smoothly but not too heavy. And Repeat as need be until your model is a solid color, remember to use care when applying as not to over paint the model. Remember to let each coat of paint dry overnight or a day to ensure best results.

Chapter 3 Painting

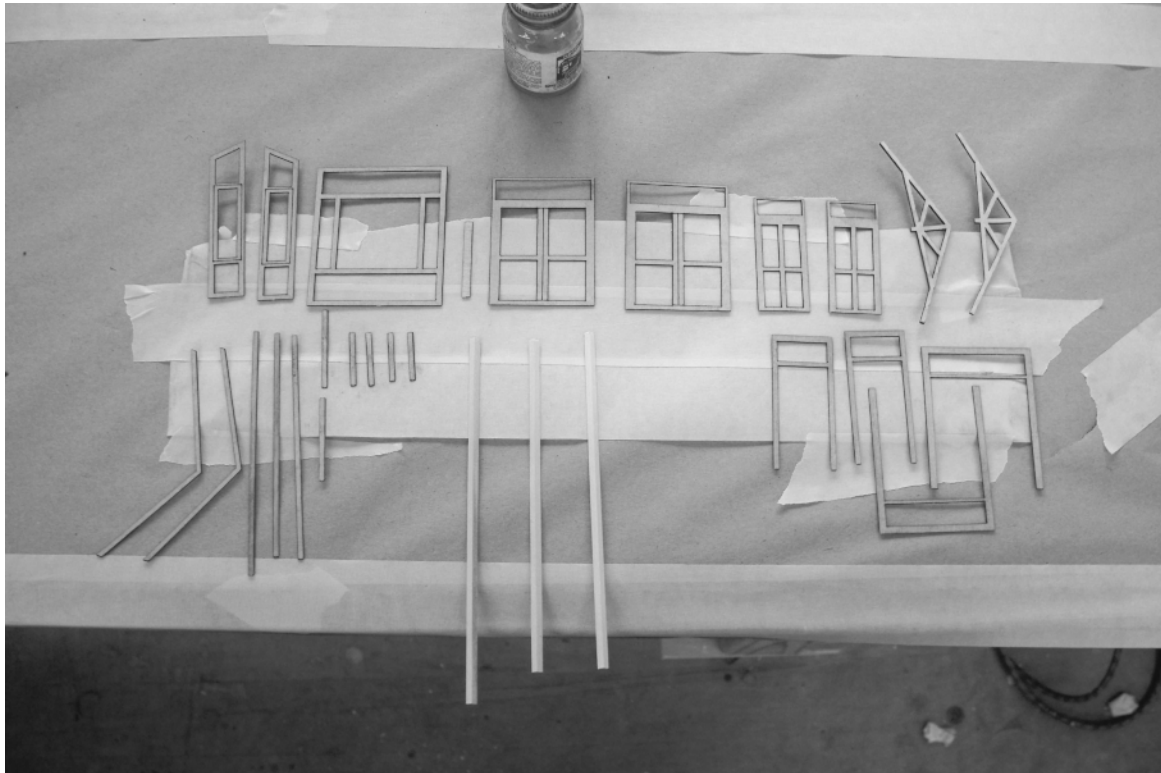


Now that our station is painted and has dried overnight, we will use our sanding stick to sand any rough appearances on the siding smooth. A single stroke will usually smooth out the surface. Do not over sand as you will lose detail. Just press lightly and follow the grain moving left to right or right to left. Your structure will most likely need a final coat, use your air brush to apply a top coat of paint. Remember after each coat of paint or sanding to clean your structure with a soft brush or tooth brush to remove any fuzz and blow off with clean air. A clean surface will ensure a clean paint job. Remember a paint job can make or break the model's outcome.

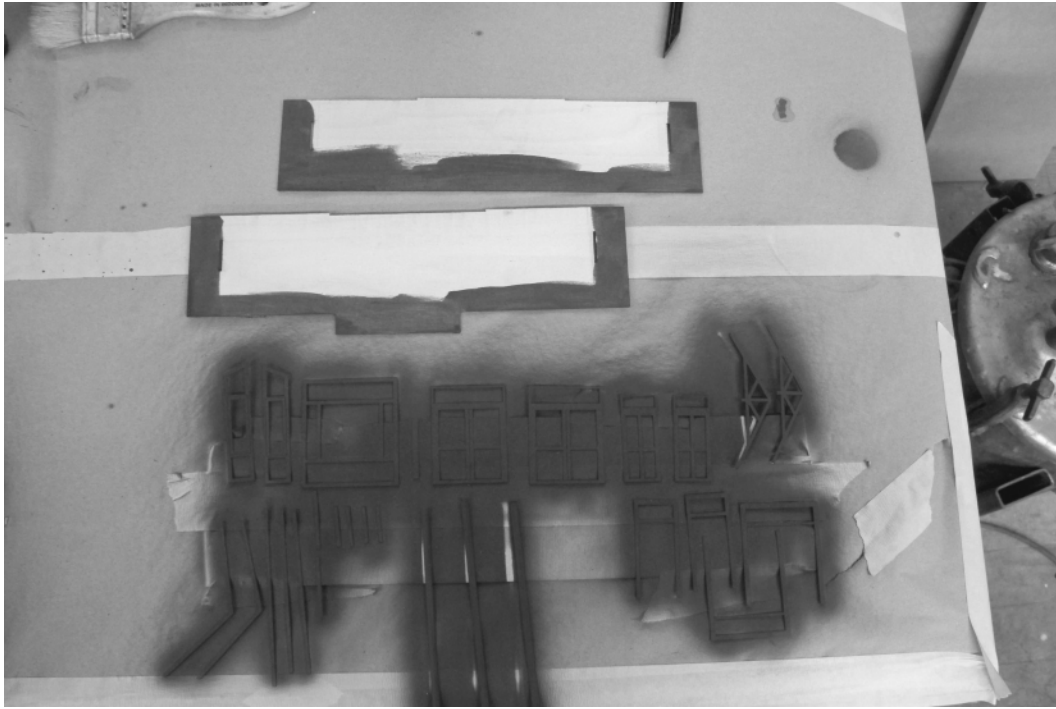
Chapter 3 Painting



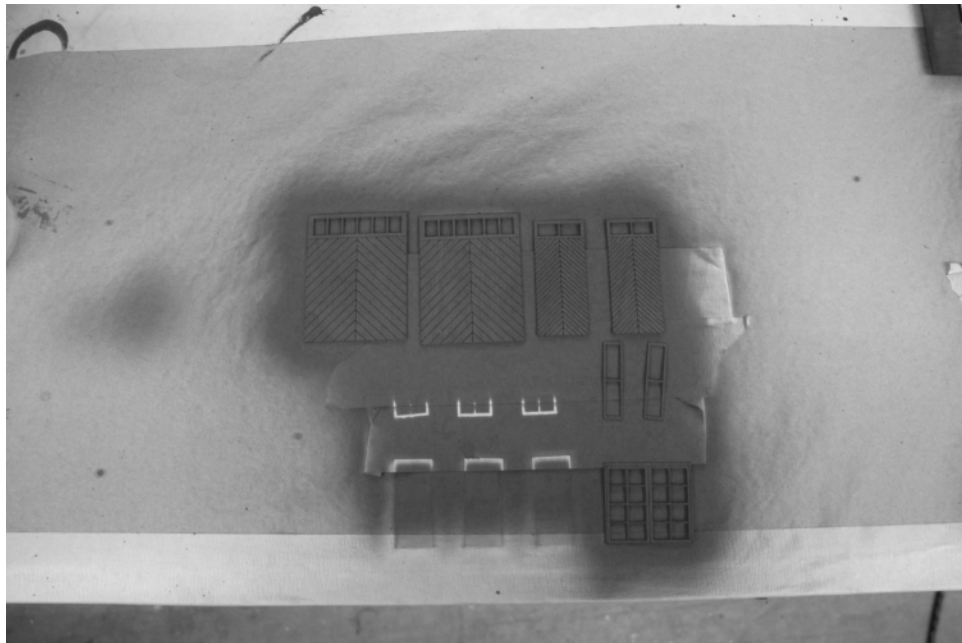
While your structure is drying you can proceed to paint your trim. Start by cutting out all of the pieces. Then use masking tape laid out face up or sticky side up to stick the parts to, as shown below. This will help you to keep track of your parts and to make the painting process clean and organized.



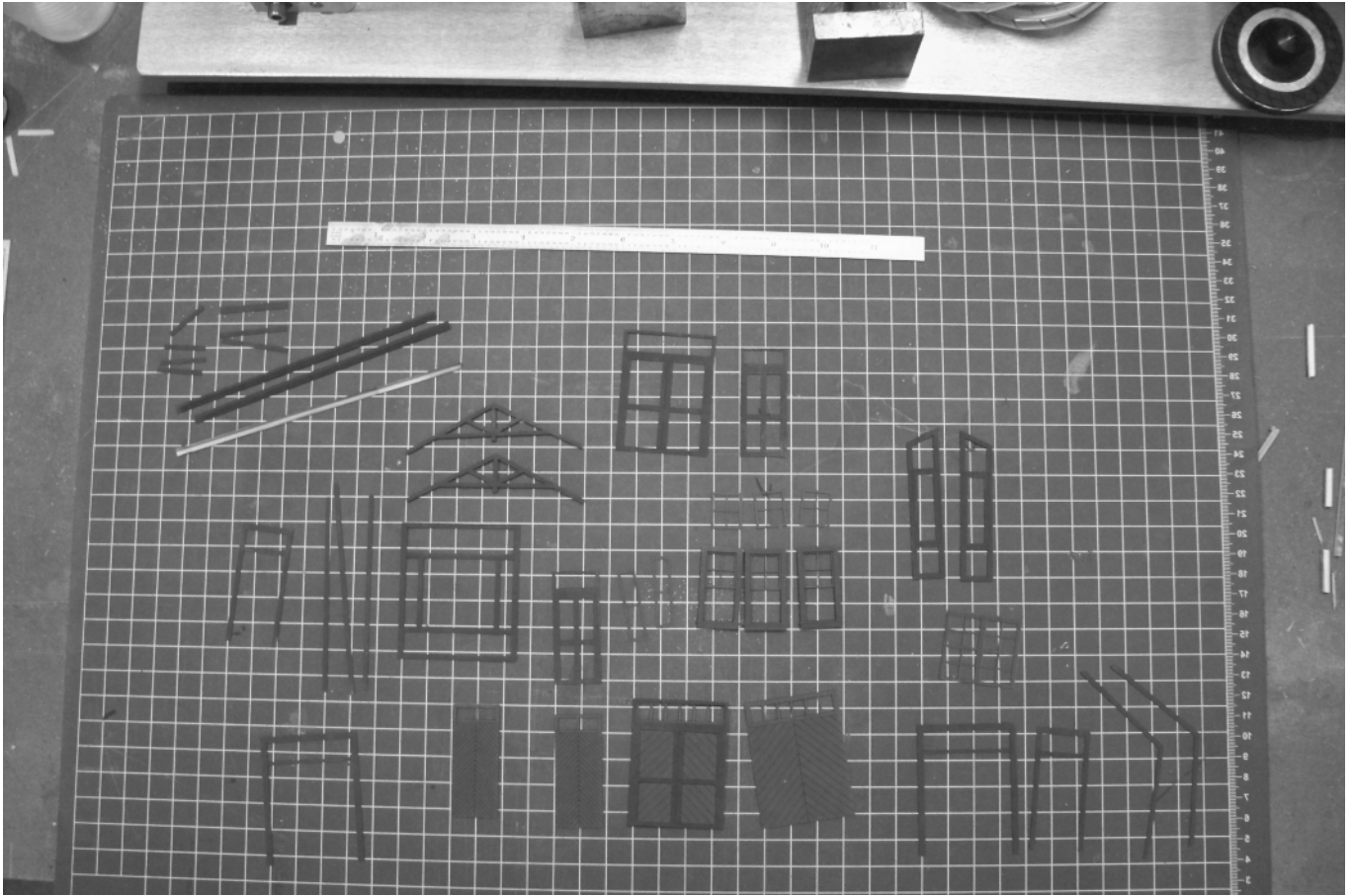
Chapter 3 Painting



Spray the parts in same manner as the building. Remove the parts from tape once they are dry to touch and allow to finish drying over night. Then clean using a soft brush. To apply a top coat of paint reapply the parts to the masking tape. Paint and once again removing from tape after they are dry to touch.



Chapter 3 Painting



Now that your parts are dried you are ready to proceed.

This process is a lot of work, but the paint job of any model can make it or break it.

Proceed to Chapter 4

Chapter 3 Painting

Thank You for visiting our Help Link. Please check back for more kits, news and updates.

altoonamodelworks.us

How to navigate our series:

For ease of downloading and navigation our series are divided by topic into chapters. For topic you will select a chapter for downloaded located at:

http://altoonamodelworks.us/Cart/help_link.php

On this page you will click on the link to the PDF of your choice. Once selected you may download, print or return to: altoonamodelworks.us as often as you need to. Since the Modeler's Help Link will be provided to you in series be sure to check back for additional chapters and new building projects.

[INTRODUCTION: Navigation of site/ tools/ glues](#)

[CHAPTER 1: Assembly of Masonite/Sub-structure](#)

[CHAPTER 1.5 \(OPTIONAL\) SIDING DETAILS: Nails, Making Divided Clapboard siding, and Loose Siding](#)

[Chapter 2: Siding](#)

[Chapter 3: Painting Chapter](#)

[4: Trim and Detail Chapter](#)

[5: Roof Assembly](#)