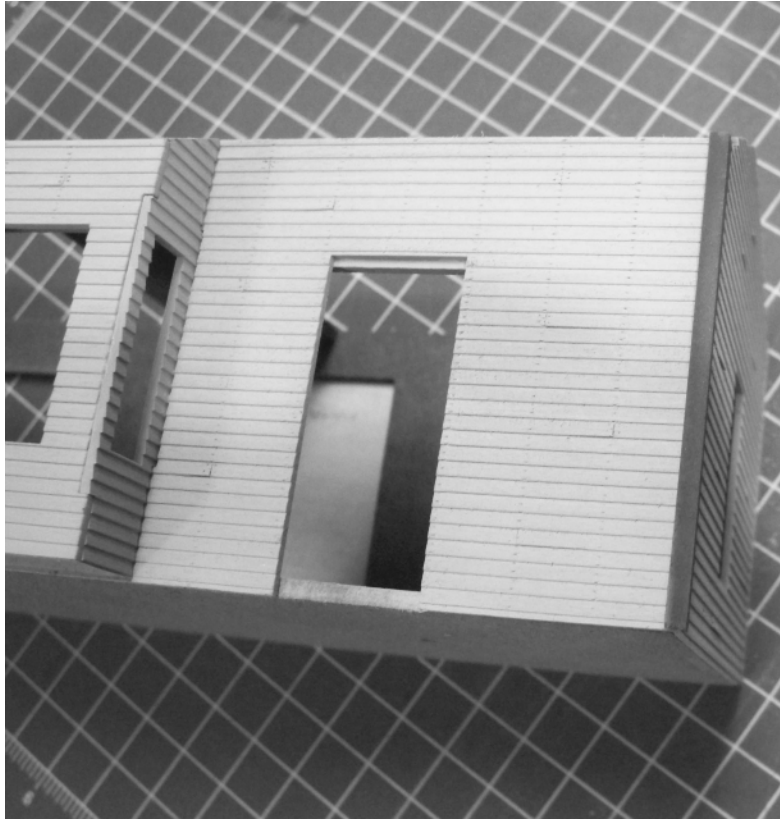


# Chapter 4

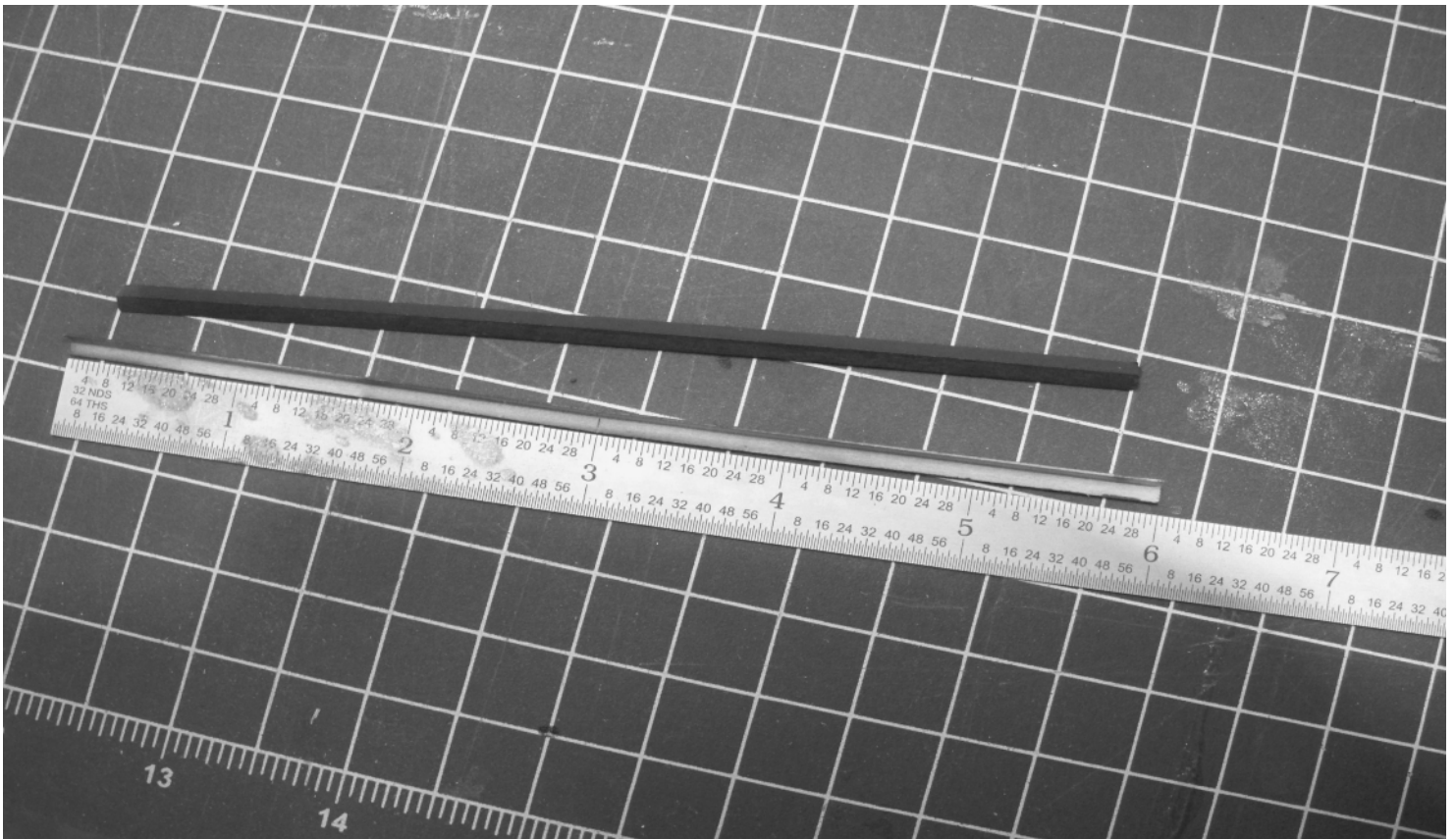
## **Application of Trim and Additional Detail**

This is an in depth article on building the Altoona Model Works O-scale Branchline Station. This Series will cover the construction in much detail to assist you. We will cover from box to layout the process of creating a museum quality model.

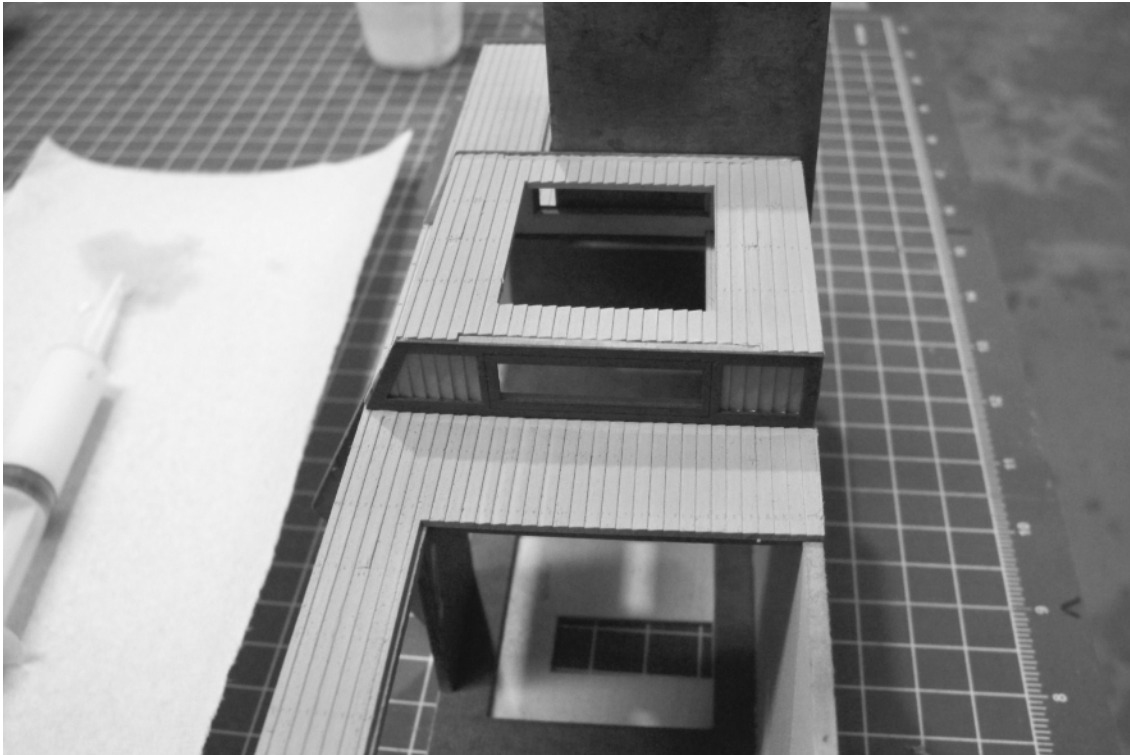
## Chapter 4 Trim and Detail



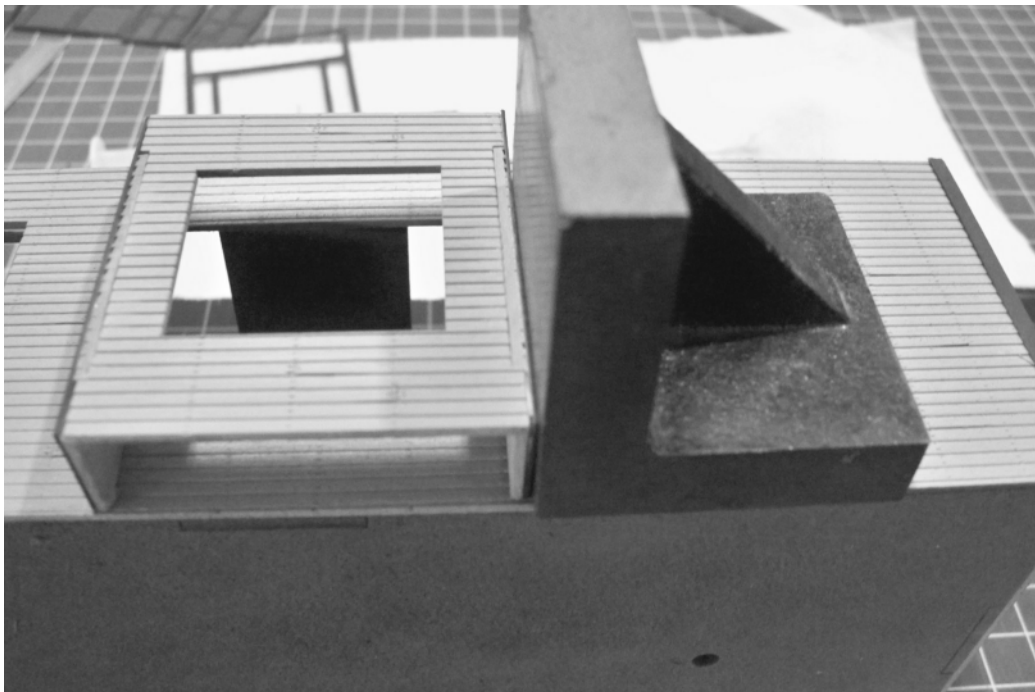
Your trim parts are ready for installation, start by adding the corner trim pieces, note that these parts may need to be measured and cut before glued, measure twice and cut once. Use a hobby knife to make the cuts. Add white glue to the back of the trim piece and install to the corner. Apply white glue using syringe and plastic tip. Use a micro bush or Qtip to wipe off access glue.



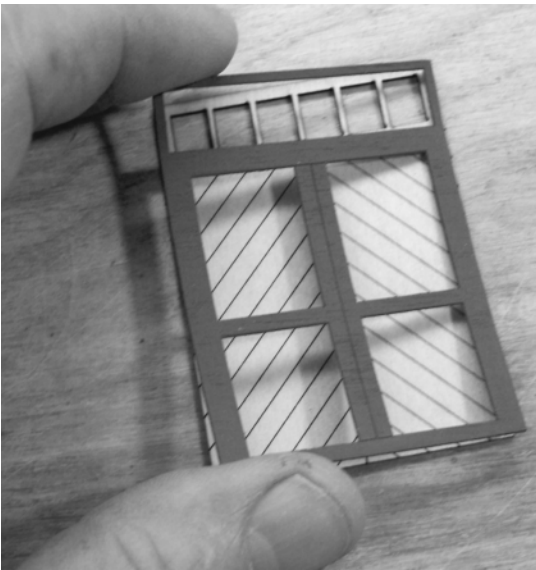
## Chapter 4 Trim and Detail



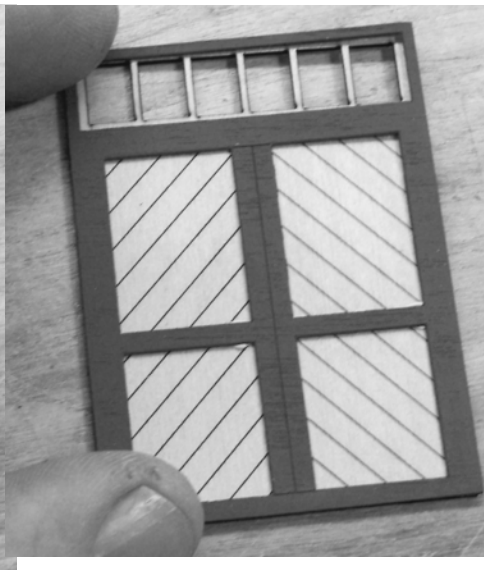
Next add trim piece to both sides of the bay window. Then glue front trim piece in. Using weights to ensure a secure fit. Use white glue applied with syringe and wipe off excess glue if need be.



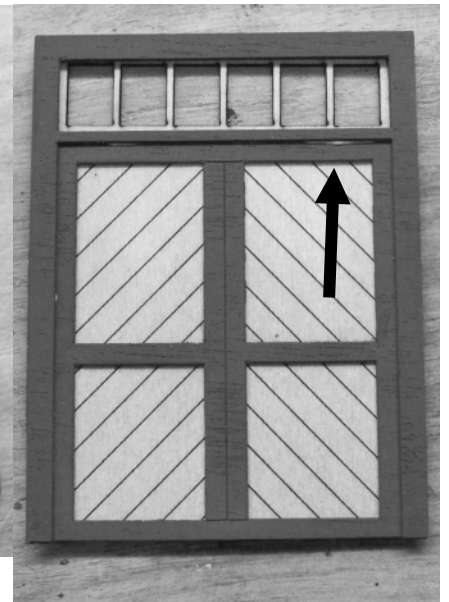
## Chapter 4 Trim and Detail



1



2



3

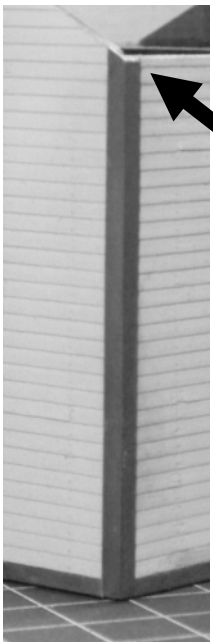
For Doors and Windows use white glue or tacky glue with syringe and plastic tip applicator.

1: once glued set trim piece in place and weigh down for a couple of minutes. Remove weight and clean access glue as shown in picture three.

2: Once positioned it should look as shown.

3. Then bond outside trim, Remember to use a micro brush or Qtip dipped in water to wipe off access glue

Once your corner trim is securely glued in place take your sanding block and sand the top edge to match the angle of the side wall



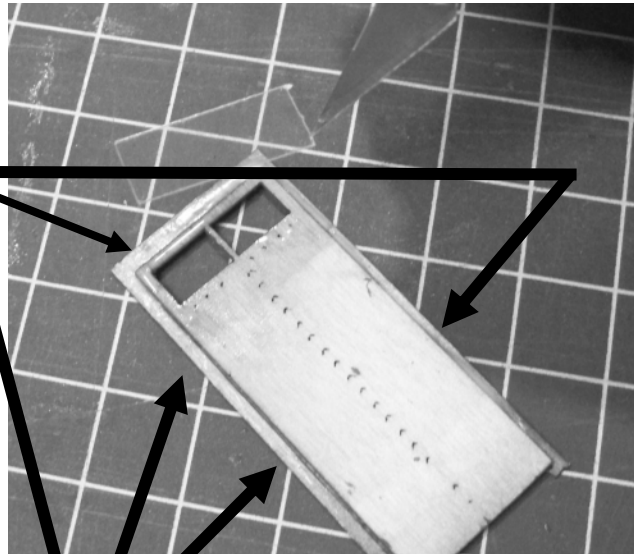
## Chapter 4 Trim and Detail



To install window glaze first cut out matching glaze to the window, remove film from glaze, apply white glue to the edges of the window frame on the underside. Use tweezers to set glaze into place. Once white glue has dried take a micro brush dipped in water to clean the window clear of excess glue.

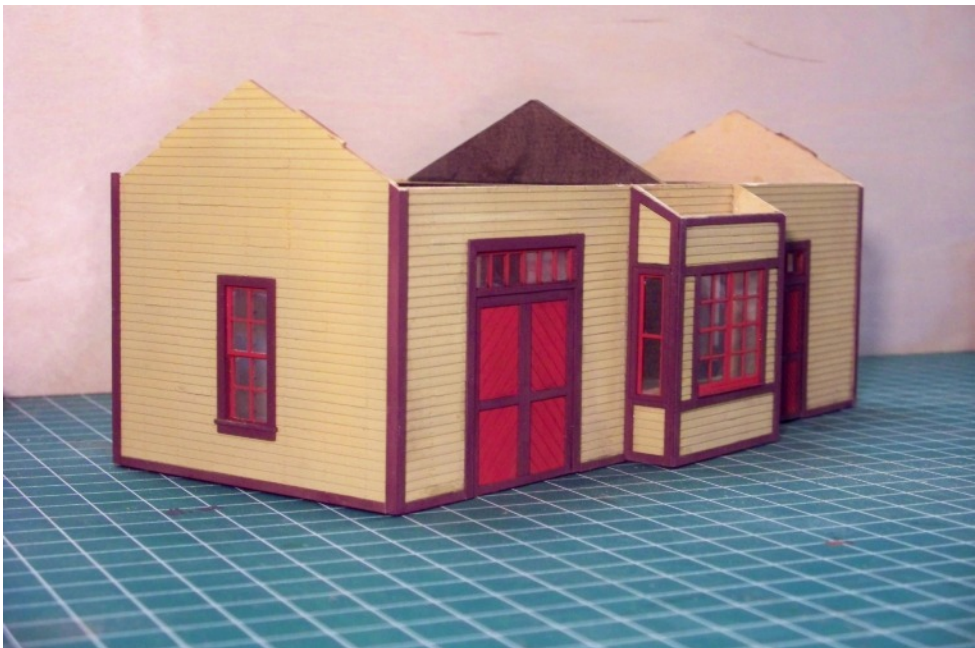
Then you are ready to glue each door and window into place using white glue

On plastic windows use Plastic Cement with plastic applicator to adhere the glaze.



After windows are done. Glue here using white glue and place door or window in place on the structure, place weight on top and allow to dry..

Chapter 4 Trim and Detail



Thank You for visiting our Help Link. Please check back for more kits, news and updates.

[altoonamodelworks.us](http://altoonamodelworks.us)

## How to navigate our series:

For ease of downloading and navigation our series are divided by topic into chapters. For topic you will select a chapter for downloaded located at:

[http://altoonamodelworks.us/Cart/help\\_link.php](http://altoonamodelworks.us/Cart/help_link.php)

On this page you will click on the link to the PDF of your choice. Once selected you may download, print or return to: [altoonamodelworks.us](http://altoonamodelworks.us) as often as you need to. Since the Modeler's Help Link will be provided to you in series be sure to check back for additional chapters and new building projects.

[INTRODUCTION: Navigation of site/ tools/ glues](#)

[CHAPTER 1: Assembly of Masonite/Sub-structure](#)

[CHAPTER 1.5 \(OPTIONAL\) SIDING DETAILS: Nails, Making Divided Clapboard siding, and Loose Siding](#)

[Chapter 2: Siding](#)

[Chapter 3: Painting Chapter](#)

[4: Trim and Detail Chapter](#)

[5: Roof Assembly](#)